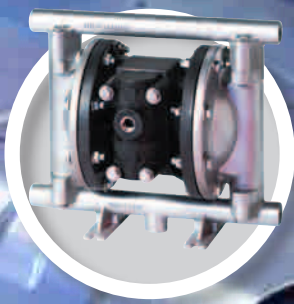
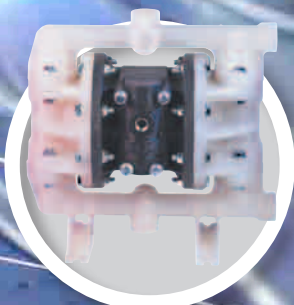
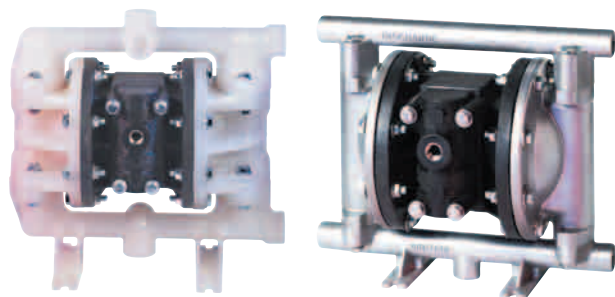


1/2" HEAVY DUTY



1/2" HEAVY DUTY BOLTED STYLE PUMP



1/2" HEAVY DUTY BOLTED STYLE PUMP

Engineered for maximum fluid and chemical compatibility. Heavy duty, non-metallic air valve ensures stall free and freeze free operation. Bolted design provides ease of maintenance and leak free operation. Available in a variety of materials and options.

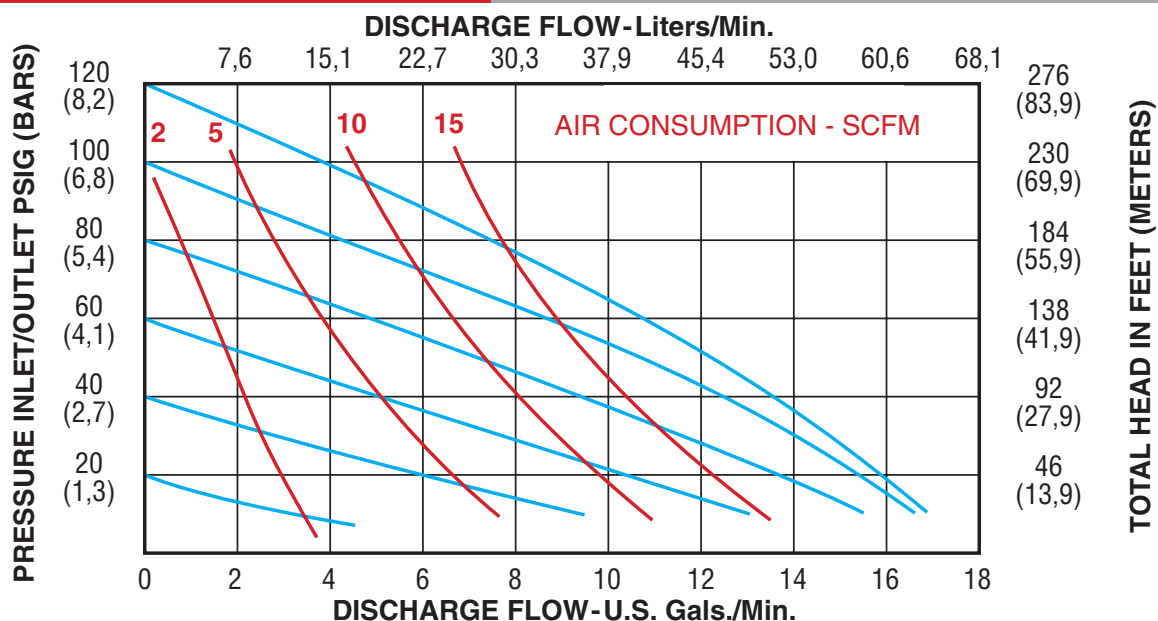
- Suitable for Clean Fluids, Slurries or up to 1/8" Solids
- Heavy Duty Air Valve
- Available in Metallic or Non-Metallic Wetted Components
- Muffler Included

SPECIFICATIONS

Dimension	
Physical Dimensions	See Drawing Page 74
Air Inlet	1/4"
Liquid Inlet	1/2"
Liquid Outlet	1/2"
Weight	See Product Tables
Performance	
Maximum Flow	17 gpm (64.6 lpm)
Maximum Air Pressure	120 psi (8.2 bar)
Maximum Solids	1/8" (3.2 mm)
Max Suction Lift Dry	15 ft (4.5 m)
Max Suction Lift Wet	26 ft (7.9 m)
Max Suction Lift Dry with PTFE	10 ft (3 m)
Max Temperature	See Product Tables
Noise Level (with muffler)	83 dBA



PERFORMANCE CURVE (Based on water-flooded suction)



1/2" - ALUMINUM - General Purpose pump, suitable for water, oils, most solvents, and most paints. Please consult chemical compatibility tables or www.all-flo.com for your particular application.

PART NUMBER	DIAPHRAGM MATERIAL	VALVE/BALL MATERIAL	VALVE SEAT MATERIAL	O-RING MATERIAL	FASTENER MATERIAL	WEIGHT LBS (KG)	MAX TEMPERATURE °F (°C)	DIMENSIONAL DIAGRAM	CONNECT TYPE
AN-05	Geolast®	Nitrile	Polypropylene	Nitrile	SS	10 (4.5)	180 (100)	Pg. 74	NPT (BSP)
AB-05	Geolast®	Geolast®	Polypropylene	Nitrile	SS	10 (4.5)	180 (100)	Pg. 74	NPT (BSP)
AB-05-B2	Geolast®	PTFE	Polypropylene	Nitrile	SS	10 (4.5)	212 (100)	Pg. 74	NPT (BSP)
AT-05	PTFE	PTFE	Nylon	PTFE	SS	10 (4.5)	212 (100)	Pg. 74	NPT (BSP)
AE-05	Santoprene®	Santoprene®	Polypropylene	EPDM	SS	10 (4.5)	212 (100)	Pg. 74	NPT (BSP)
AV-05	Viton®	Viton®	Nylon	Viton®	SS	10 (4.5)	212 (100)	Pg. 74	NPT (BSP)

1/2" - 316 SS - Corrosion resistant steel, suitable for nitric acid, chlorinated solvents, caustics and marine applications. Please consult chemical compatibility tables or www.all-flo.com for your particular application.

PART NUMBER	DIAPHRAGM MATERIAL	VALVE/BALL MATERIAL	VALVE SEAT MATERIAL	O-RING MATERIAL	FASTENER MATERIAL	WEIGHT LBS (KG)	MAX TEMPERATURE °F (°C)	DIMENSIONAL DIAGRAM	CONNECT TYPE
SN-05	Geolast®	Nitrile	SS	Nitrile	SS	19 (8.6)	180 (100)	Pg. 74	NPT (BSP)
SB-05	Geolast®	Geolast®	SS	Nitrile	SS	19 (8.6)	180 (100)	Pg. 74	NPT (BSP)
SP-05	PTFE	PTFE	SS	PTFE	SS	19 (8.6)	212 (100)	Pg. 74	NPT (BSP)
SE-05	Santoprene®	Santoprene®	SS	EPDM	SS	19 (8.6)	212 (100)	Pg. 74	NPT (BSP)
SV-05	Viton®	Viton®	SS	Viton®	SS	19 (8.6)	212 (100)	Pg. 74	NPT (BSP)

1/2" - POLYPROPYLENE - A non-metallic material, suitable for water, caustics, soap solutions, mild acids and general purpose applications. Please consult chemical compatibility tables or www.all-flo.com for your particular application.

PART NUMBER	DIAPHRAGM MATERIAL	VALVE/BALL MATERIAL	VALVE SEAT MATERIAL	O-RING MATERIAL	FASTENER MATERIAL	WEIGHT LBS (KG)	MAX TEMPERATURE °F (°C)	DIMENSIONAL DIAGRAM	CONNECT TYPE
PN-05	Geolast®	Nitrile	Polypropylene	Nitrile	SS	9 (4.1)	150 (66)	Pg. 74	NPT (BSP)
PB-05	Geolast®	Geolast®	Polypropylene	Nitrile	SS	9 (4.1)	150 (66)	Pg. 74	NPT (BSP)
PT-05	PTFE	PTFE	Polypropylene	PTFE	SS	9 (4.1)	150 (66)	Pg. 74	NPT (BSP)
PE-05	Santoprene®	Santoprene®	Polypropylene	EPDM	SS	9 (4.1)	150 (66)	Pg. 74	NPT (BSP)
PV-05	Viton®	Viton®	Polypropylene	Viton®	SS	9 (4.1)	150 (66)	Pg. 74	NPT (BSP)

1/2" - PVDF - Polyvinylidene Fluoride suitable in applications requiring the highest purity, strength, and resistance to solvents, acids, and bases. Please consult chemical compatibility tables or www.all-flo.com for your particular application.

PART NUMBER	DIAPHRAGM MATERIAL	VALVE/BALL MATERIAL	VALVE SEAT MATERIAL	O-RING MATERIAL	FASTENER MATERIAL	WEIGHT LBS (KG)	MAX TEMPERATURE °F (°C)	DIMENSIONAL DIAGRAM	CONNECT TYPE
KT-05	PTFE	PTFE	PVDF	PTFE	SS	12 (5.4)	200 (93)	Pg. 74	NPT (BSP)
KE-05	Santoprene®	Santoprene®	PVDF	EPDM	SS	12 (5.4)	200 (93)	Pg. 74	NPT (BSP)
KV-05	Viton®	Viton®	PVDF	Viton®	SS	12 (5.4)	200 (93)	Pg. 74	NPT (BSP)

1/2" - NYLON - A non-metallic material, suitable for most solvents and oils. Please consult chemical compatibility tables or www.all-flo.com for your particular application.

PART NUMBER	DIAPHRAGM MATERIAL	VALVE/BALL MATERIAL	VALVE SEAT MATERIAL	O-RING MATERIAL	FASTENER MATERIAL	WEIGHT LBS (KG)	MAX TEMPERATURE °F (°C)	DIMENSIONAL DIAGRAM	CONNECT TYPE
NN-05	Geolast®	Nitrile	PVDF	Nitrile	SS	9 (4.1)	150 (66)	Pg. 74	NPT (BSP)
NB-05	Geolast®	Geolast®	PVDF	Nitrile	SS	9 (4.1)	150 (66)	Pg. 74	NPT (BSP)
NT-05	PTFE	PTFE	PVDF	PTFE	SS	9 (4.1)	150 (66)	Pg. 74	NPT (BSP)
NV-05	Viton®	Viton®	PVDF	Viton®	SS	9 (4.1)	150 (66)	Pg. 74	NPT (BSP)

1/2" - CONDUCTIVE NYLON - Stainless steel filled nylon, suitable for most solvents and alcohols. Grounding lugs provided with pump. Please consult chemical compatibility tables or www.all-flo.com for your particular application.

PART NUMBER	DIAPHRAGM MATERIAL	VALVE/BALL MATERIAL	VALVE SEAT MATERIAL	O-RING MATERIAL	FASTENER MATERIAL	WEIGHT LBS (KG)	MAX TEMPERATURE °F (°C)	DIMENSIONAL DIAGRAM	CONNECT TYPE
CN-05	Geolast®	Nitrile	SS	Nitrile	SS	12 (5.4)	150 (66)	Pg. 74	NPT (BSP)
CB-05	Geolast®	Geolast®	SS	Nitrile	SS	12 (5.4)	150 (66)	Pg. 74	NPT (BSP)
CT-05	PTFE	PTFE	SS	PTFE	SS	12 (5.4)	150 (66)	Pg. 74	NPT (BSP)
CV-05	Viton®	Viton®	SS	Viton®	SS	12 (5.4)	150 (66)	Pg. 74	NPT (BSP)

AVAILABLE OPTIONS - Each pump can be configured to suit a particular application. Please see the options section for detailed product information on the following available options.

AIR VALVE OPTIONS		SEE PAGE 67
CYCLE COUNT VALVE	SOLENOID ADAPTOR VALVE	
BALL VALVE OPTIONS		SEE PAGE 67
GEOLAST®	PTFE	
SANTOPRENE®	STAINLESS STEEL	
BALL VALVE OPTIONS		SEE PAGE 67
HARD COAT ANODIZING		
PASSIVATED & ELECTROPOLISHED		
HARDWARE OPTIONS		SEE PAGE 67
PTFE COATED HARDWARE		
O-RINGS		SEE PAGE 67
PTFE O-RINGS	NITRILE O-RINGS	
EPDM O-RINGS	VITON O-RINGS	
PORTING OPTIONS		SEE PAGE 68
DUAL DISCHARGE / SUCTION		ALL PORTS OPEN
DISCHARGE UP, AIR INLET / EXHAUST		
SUCTION / DOWN, AIR INLET/EXHAUST		
SUCTION / DISCHARGE LEFT		
SUCTION RIGHT & DISCHARGE LEFT		
SUCTION LEFT & DISCHARGE RIGHT		
VALVE SEAT OPTIONS		SEE PAGE 68
POLYPROPYLENE	PVDF	
STAINLESS STEEL		
MAX PASS VALVE SOLIDS HANDLING OPTIONS		SEE PAGE 68
NITRILE	EPDM	FDA VITON®

AVAILABLE ACCESSORIES - Please see the accessories section for detailed product information on the following available accessories.

AIR	SEE PAGE
FILTER / REGULATOR / GAUGE	60
SOLENOID VALVES	60
AIR FLOW CONTROL VALVES	60
NEEDLE VALVE	60
LIQUID	
SUCTION STRAINER	61
FILTER HOUSING	61
PUMP	
PREMIUM MUFFLER	63
GROUNDING LUG	64
METAL MUFFLER	63



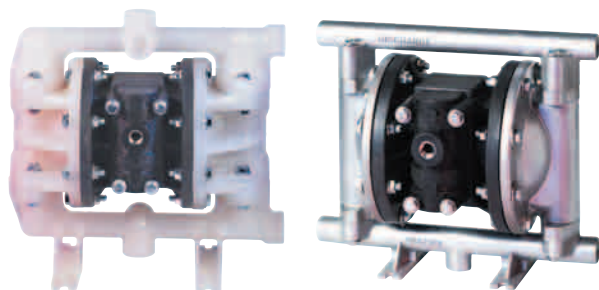
METALLIC
All of our 1/2" metallic pumps have a non-metallic center section. This design concept ensures maximum chemical compatibility while protecting from environmental corrosion.



CONDUCTIVE NYLON
Our conductive nylon pumps achieve desired chemical compatibility while providing grounding capability for safe operation.



NON-METALLIC
Our non-metallic pumps are available in a variety of materials and porting options, allowing for maximum application installation.



1/2" HEAVY DUTY BOLTED STYLE SOLIDS HANDLING PUMP

Engineered for maximum fluid and chemical compatibility. Heavy duty, stall free, non-metallic air section ensures stall free and freeze free operation. Our patented "Max-Pass™" valve system allows operation under a variety of conditions, ranging from clean fluids to slurries, to solids applications. Bolted design provides ease of maintenance and leak free operation. Available in a variety of materials and options.

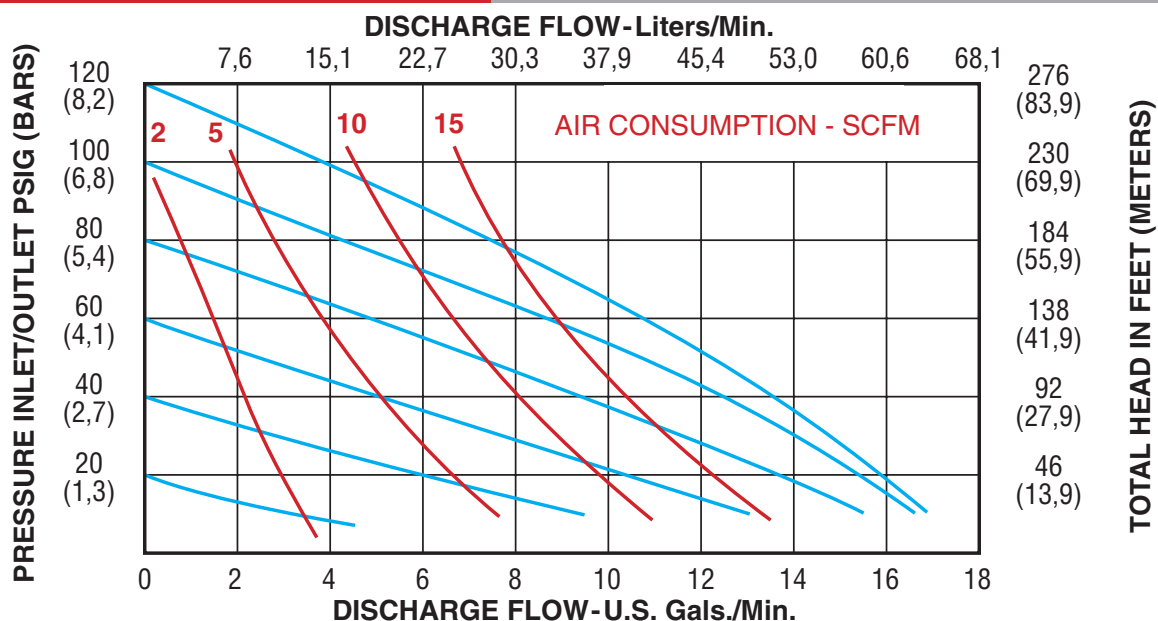
- Suitable for Clean Fluids, Slurries or up to 3/8" Solids
- Heavy Duty Air Valve
- Available in Metallic or Non-Metallic Wetted Components
- Muffler Included

SPECIFICATIONS

Dimension	
Physical Dimensions	See Drawing Page 74
Air Inlet	1/4"
Liquid Inlet	1/2"
Liquid Outlet	1/2"
Weight	See Product Tables
Performance	
Maximum Flow	17 gpm (64.6 lpm)
Maximum Air Pressure	120 psi (8.2 bar)
Maximum Solids	3/8" (mm)
Max Suction Lift Dry	20 ft (6 m)
Max Suction Lift Wet	26 ft (7.9 m)
Max Temperature	See Product Tables
Noise Level (with muffler)	83 dBA



PERFORMANCE CURVE (Based on water-flooded suction)



1/2" HEAVY DUTY BOLTED STYLE SOLIDS HANDLING PUMP

1/2" - ALUMINUM - General purpose pump, suitable for water, oils, most solvents, and most paints. Please consult chemical compatibility tables or www.all-flo.com for your particular application.

PART NUMBER	DIAPHRAGM MATERIAL	VALVE/BALL MATERIAL	VALVE SEAT MATERIAL	O-RING MATERIAL	FASTENER MATERIAL	WEIGHT LBS (KG)	MAX TEMPERATURE °F (°C)	DIMENSIONAL DIAGRAM	CONNECT TYPE
AB-05-M4	Geolast®	Nitrile Max-Pass™	N/A	Nitrile	SS	10 (4.5)	180 (82)	Pg. 74	NPT (BSP)
AE-05-M5	Santoprene®	EPDM Max-Pass™	N/A	EPDM	SS	10 (4.5)	212 (100)	Pg. 74	NPT (BSP)
AV-05-M6	Viton®	Viton® Max-Pass™	N/A	Viton®	SS	10 (4.5)	212 (100)	Pg. 74	NPT (BSP)

1/2" - 316 SS - Corrosion resistant steel, suitable for nitric acid, chlorinated solvents, caustics and marine applications. Please consult chemical compatibility tables or www.all-flo.com for your particular application.

PART NUMBER	DIAPHRAGM MATERIAL	VALVE/BALL MATERIAL	VALVE SEAT MATERIAL	O-RING MATERIAL	FASTENER MATERIAL	WEIGHT LBS (KG)	MAX TEMPERATURE °F (°C)	DIMENSIONAL DIAGRAM	CONNECT TYPE
SB-05-M4	Geolast®	Nitrile Max-Pass™	N/A	Nitrile	SS	19 (8.6)	180 (82)	Pg. 74	NPT (BSP)
SE-05-M5	Santoprene®	EPDM Max-Pass™	N/A	EPDM	SS	19 (8.6)	212 (100)	Pg. 74	NPT (BSP)
SV-05-M6	Viton®	Viton® Max-Pass™	N/A	Viton®	SS	19 (8.6)	212 (100)	Pg. 74	NPT (BSP)

1/2" - POLYPROPYLENE - A non-metallic material, suitable for water, caustics, soap solutions, mild acids and general purpose applications. Please consult chemical compatibility tables or www.all-flo.com for your particular application.

PART NUMBER	DIAPHRAGM MATERIAL	VALVE/BALL MATERIAL	VALVE SEAT MATERIAL	O-RING MATERIAL	FASTENER MATERIAL	WEIGHT LBS (KG)	MAX TEMPERATURE °F (°C)	DIMENSIONAL DIAGRAM	CONNECT TYPE
PB-05-M4	Geolast®	NITRILE Max-Pass™	N/A	Nitrile	SS	9 (4.1)	150 (66)	Pg. 74	NPT (BSP)
PE-05-M5	Santoprene®	EPDM Max-Pass™	N/A	EPDM	SS	9 (4.1)	150 (66)	Pg. 74	NPT (BSP)
PV-05-M40	Viton®	Viton® Max-Pass™	N/A	Viton®	SS	9 (4.1)	150 (66)	Pg. 74	NPT (BSP)

1/2" - PVDF - Polyvinylidene fluoride suitable in applications requiring the highest purity, strength, and resistance to solvents, acids, and bases. Please consult chemical compatibility tables or www.all-flo.com for your particular application.

PART NUMBER	DIAPHRAGM MATERIAL	VALVE/BALL MATERIAL	VALVE SEAT MATERIAL	O-RING MATERIAL	FASTENER MATERIAL	WEIGHT LBS (KG)	MAX TEMPERATURE °F (°C)	DIMENSIONAL DIAGRAM	CONNECT TYPE
KE-05-M5	Santoprene®	EPDM Viton®	N/A	EPDM	SS	12 (5.4)	200 (93)	Pg. 74	NPT (BSP)
KV-05-M40	Viton®	Viton®	N/A	Viton®	SS	12 (5.4)	200 (93)	Pg. 74	NPT (BSP)

1/2" - NYLON - A non-metallic material, suitable for most solvents and oils. Please consult chemical compatibility tables or www.all-flo.com for your particular application.

PART NUMBER	DIAPHRAGM MATERIAL	VALVE/BALL MATERIAL	VALVE SEAT MATERIAL	O-RING MATERIAL	FASTENER MATERIAL	WEIGHT LBS (KG)	MAX TEMPERATURE °F (°C)	DIMENSIONAL DIAGRAM	CONNECT TYPE
NB-05-M4	Geolast®	NITRILE Max-Pass™	N/A	Nitrile	SS	9 (4.1)	150 (66)	Pg. 74	NPT (BSP)
NV-05-M40	Viton®	Viton® Max-Pass™	N/A	Viton®	SS	9 (4.1)	150 (66)	Pg. 74	NPT (BSP)

1/2" - CONDUCTIVE NYLON - Stainless steel filled nylon, suitable for most solvents and alcohols. Grounding lugs provided with pump. Please consult chemical compatibility tables or www.all-flo.com for your particular application.

PART NUMBER	DIAPHRAGM MATERIAL	VALVE/BALL MATERIAL	VALVE SEAT MATERIAL	O-RING MATERIAL	FASTENER MATERIAL	WEIGHT LBS (KG)	MAX TEMPERATURE °F (°C)	DIMENSIONAL DIAGRAM	CONNECT TYPE (BSP)
CB-05-M4	Geolast®	Nitrile Max-Pass™	N/A	Nitrile	SS	10 (4.5)	150 (66)	Pg. 74	NPT (BSP)
CV-05-M40	Viton®	Viton® Max-Pass™	N/A	Viton®	SS	10 (4.5)	150 (66)	Pg. 74	NPT (BSP)

AVAILABLE OPTIONS - Each pump can be configured to suit a particular application. Please see the options section for detailed product information on the following available options.

AIR VALVE OPTIONS		SEE PAGE 67
CYCLE COUNT VALVE	SOLENOID ADAPTOR VALVE	
BALL VALVE OPTIONS		SEE PAGE 67
GEOLAST®	PTFE	
SANTOPRENE®	STAINLESS STEEL	
WETTED CHAMBER FINISH OPTIONS		SEE PAGE 67
HARD COAT ANODIZING		
PASSIVATED & ELECTROPOLISHED		
HARDWARE OPTIONS		SEE PAGE 67
PTFE COATED HARDWARE		
O-RINGS		SEE PAGE 67
PTFE O-RINGS	NITRILE O-RINGS	
EPDM O-RINGS	VITON® O-RINGS	
PORTING OPTIONS		SEE PAGE 68
DUAL DISCHARGE / SUCTION	ALL PORTS OPEN	
SUCTION / DOWN		
VALVE SEAT OPTIONS		SEE PAGE 68
POLYPROPYLENE	NYLON	
PVDF	STAINLESS STEEL	
MAX PASS VALVE SOLIDS HANDLING OPTIONS		SEE PAGE 68
NITRILE	EPDM	FDA VITON®
MISC. AND SPECIAL OPTIONS		SEE PAGE 68
ATEX CATEGORY 2		

AVAILABLE ACCESSORIES - Please see the accessories section for detailed product information on the following available accessories.

AIR	SEE PAGE
FILTER / REGULATOR / GAUGE	60
SOLENOID VALVES	60
AIR FLOW CONTROL VALVES	60
NEEDLE VALVE	60
LIQUID	
SUCTION STRAINER	61
FILTER HOUSING	61
PUMP	
PREMIUM MUFFLER	63
GROUNDING LUG	64
METAL MUFFLER	63

MAX-PASS SOLIDS HANDLING VALVE

- Increased suction lift
- Up to 3/8" solids
- Mounts in any position



METALLIC

All of our 1/2" metallic pumps have a non-metallic center section. This design concept ensures maximum chemical compatibility while protecting from environmental corrosion.



CONDUCTIVE NYLON

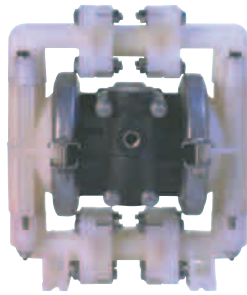
Our conductive nylon pumps achieve desired chemical compatibility while providing grounding capability for safe operation.



NON-METALLIC

Our non-metallic pumps are available in a variety of materials and porting options, allowing for maximum application installation.

1/2" HEAVY DUTY CLAMPED STYLE PUMP



1/2" HEAVY DUTY CLAMPED STYLE PUMP

Reliable polypropylene air center section combined with non-metallic clamped casing materials ensure maximum chemical compatibility. Available in a variety of materials and options.

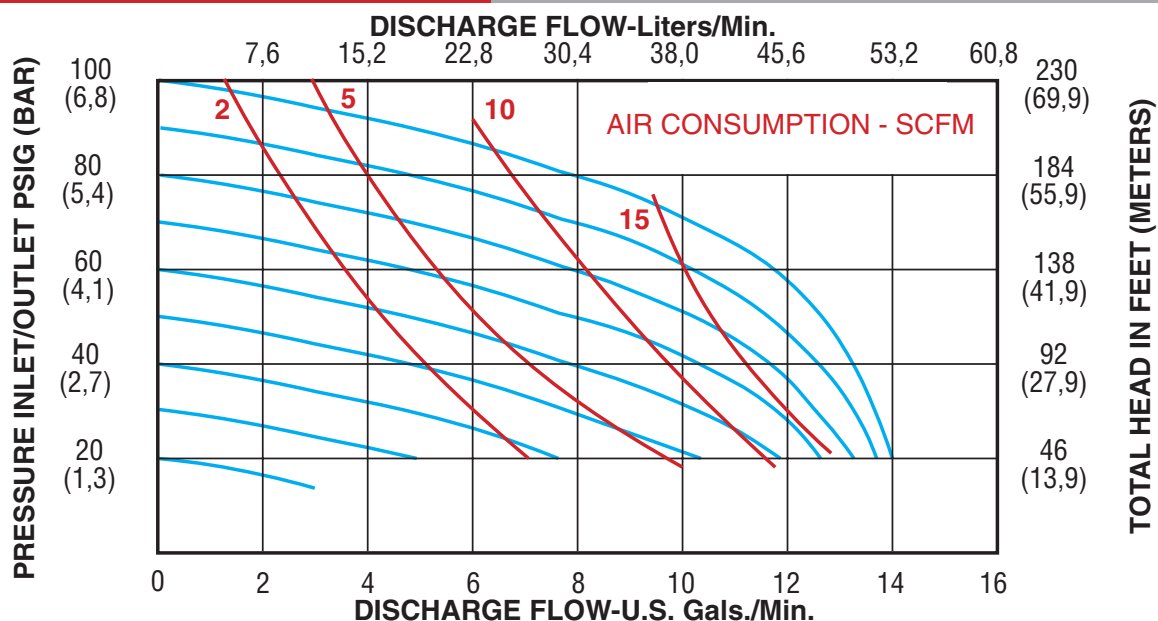
- Suitable for Clean Fluids, Slurries or up to 1/8" Solids
- Heavy Duty Air Valve
- Non-Metallic Wetted Components
- Muffler Included

SPECIFICATIONS

Dimension	
Physical Dimensions	See Drawing Page 75
Air Inlet	1/4"
Liquid Inlet	1/2"
Liquid Outlet	1/2"
Weight	See Product Tables
Performance	
Maximum Flow	gpm (lpm)
Maximum Air Pressure	100 psi (6.8 bar)
Maximum Solids	1/8" (3.2 mm)
Max Suction Lift Dry	15 ft (4.5 m)
Max Suction Lift Wet	26 ft (7.9 m)
Max Suction Lift Dry with PTFE	10 ft (3 m)
Max Temperature	See Product Tables
Noise Level (with muffler)	83 dBA



PERFORMANCE CURVE (Based on water-flooded suction)



1/2" - POLYPROPYLENE - A non-metallic material, suitable for water, caustics, soap solutions, mild acids and general purpose applications. Please consult chemical compatibility tables or www.all-flo.com for your particular application.

PART NUMBER	DIAPHRAGM MATERIAL	VALVE/BALL MATERIAL	VALVE SEAT MATERIAL	O-RING MATERIAL	FASTENER MATERIAL	WEIGHT LBS (KG)	MAX TEMPERATURE °F (°C)	DIMENSIONAL DIAGRAM	CONNECT TYPE
NC-5N	Geolast®	Nitrile	Polypropylene	Nitrile	SS & PS	8 (3.6)	150 (66)	Pg. 75	NPT (BSP)
NC-5	Geolast®	Geolast®	Polypropylene	Nitrile	SS & PS	8 (3.6)	150 (66)	Pg. 75	NPT (BSP)
BK-5	PTFE	PTFE	Polypropylene	PTFE	SS	8 (3.6)	150 (66)	Pg. 75	NPT (BSP)
BK-5E	Santoprene®	Santoprene®	Polypropylene	EPDM	SS	8 (3.6)	150 (66)	Pg. 75	NPT (BSP)
BK-5V	Viton®	Viton®	Polypropylene	Viton®	SS	8 (3.6)	150 (66)	Pg. 75	NPT (BSP)

1/2" - PVDF - Polyvinylidene fluoride suitable in applications requiring the highest purity, strength, and resistance to solvents, acids, and bases. Please consult chemical compatibility tables or www.all-flo.com for your particular application.

PART NUMBER	DIAPHRAGM MATERIAL	VALVE/BALL MATERIAL	VALVE SEAT MATERIAL	O-RING MATERIAL	FASTENER MATERIAL	WEIGHT LBS (KG)	MAX TEMPERATURE °F (°C)	DIMENSIONAL DIAGRAM	CONNECT TYPE
KN-5	PVDF	PTFE	PTFE	PVDF	SS	11 (5.0)	200 (93)	Pg. 75	NPT (BSP)
KN-5E	Santoprene®	Santoprene®	PVDF	EPDM	SS	11 (5.0)	200 (93)	Pg. 75	NPT (BSP)
KN-5V	PVDF	Viton®	Viton®	PVDF	SS	11 (5.0)	200 (93)	Pg. 75	NPT (BSP)

AVAILABLE OPTIONS - Each pump can be configured to suit a particular application. Please see the options section for detailed product information on the following available options.

AIR VALVE OPTIONS	SEE PAGE 67
CYCLE COUNT VALVE	
BALL VALVE OPTIONS	SEE PAGE 67
GEOLAST®	PTFE
SANTOPRENE®	STAINLESS STEEL
HARDWARE OPTIONS	SEE PAGE 67
PTFE COATED HARDWARE	
O-RINGS	SEE PAGE 67
PTFE O-RINGS	NITRILE O-RINGS
EPDM O-RINGS	VITON® O-RINGS
PORTING OPTIONS	SEE PAGE 68
DUAL DISCHARGE / SUCTION	
DISCHARGE UP, AIR INLET	
SUCTION / DOWN, AIR INLET	
SUCTION / DISCHARGE LEFT	
SUCTION RIGHT & DISCHARGE LEFT	
SUCTION LEFT & DISCHARGE RIGHT	
VALVE SEAT OPTIONS	SEE PAGE 68
POLYPROPYLENE	NYLON
PVDF	STAINLESS STEEL

AVAILABLE ACCESSORIES - Please see the accessories section for detailed product information on the following available accessories.

AIR	SEE PAGE
FILTER / REGULATOR / GAUGE	60
SOLENOID VALVES	60
AIR FLOW CONTROL VALVES	60
NEEDLE VALVE	60
LIQUID	
SUCTION STRAINER	61
FILTER HOUSING	61
PUMP	
METAL MUFFLER	63
GROUNDING LUG	64

1/2" HEAVY DUTY BOLTED STYLE DRUM PUMP



1/2" HEAVY DUTY BOLTED STYLE DRUM PUMP

Engineered for maximum fluid and chemical compatibility. Heavy duty, non-metallic air section ensures stall free and freeze free operation. Rugged valve system allows operation under a variety of conditions, ranging from clean fluids to slurries, to small solids. Bolted design provides ease of maintenance and leak free operation. Available in a variety of materials and options.

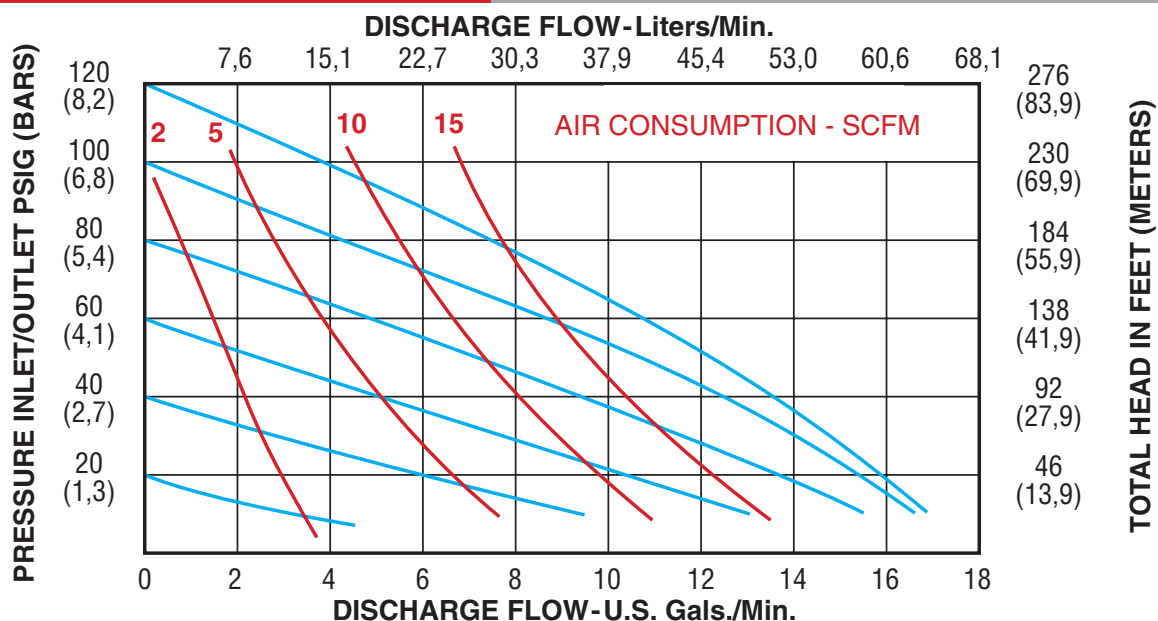
- Suitable for Clean Fluids, Slurries or up to 1/8" Solids
- Includes 40" Suction Tube and Bung Adaptor
- Solids Handling Options Available
- Heavy Duty Air Valve
- Muffler Included

SPECIFICATIONS

Dimension	
Physical Dimensions	See Drawing Page 74
Air Inlet	1/4"
Liquid Inlet	1/2"
Liquid Outlet	1/2"
Weight	See Product Tables
Performance	
Maximum Flow	17 gpm (64.6 lpm)
Maximum Air Pressure	120 psi (8.2 bar)
Maximum Solids	1/8" (3.2 mm)
Max Suction Lift Dry	15 ft (4.5 m)
Max Suction Lift Wet	26 ft (7.9 m)
Max Suction Lift Dry with PTFE	10 ft (3 m)
Max Temperature	See Product Tables
Noise Level (with muffler)	83 dBA



PERFORMANCE CURVE (Based on water-flooded suction)



1/2" - ALUMINUM - General purpose pump, suitable for water, oils, most solvents, and most paints. Please consult chemical compatibility tables or www.all-flo.com for your particular application.

PART NUMBER	DIAPHRAGM MATERIAL	VALVE/BALL MATERIAL	VALVE SEAT MATERIAL	O-RING MATERIAL	FASTENER MATERIAL	WEIGHT LBS (KG)	MAX TEMPERATURE °F (°C)	DIMENSIONAL DIAGRAM	CONNECT TYPE
AND-05	Geolast®	Nitrile	Polypropylene	Nitrile	SS	17 (7.7)	180 (82)	Pg. 74	NPT (BSP)
ABD-05	Geolast®	Geolast®	Polypropylene	Nitrile	SS	17 (7.7)	180 (82)	Pg. 74	NPT (BSP)
ABD-05-B2	Geolast®	PTFE	Polypropylene	Nitrile	SS	17 (7.7)	180 (82)	Pg. 74	NPT (BSP)
ATD-05	PTFE	PTFE	Nylon	PTFE	SS	17 (7.7)	212 (100)	Pg. 74	NPT (BSP)
AED-05	Santoprene®	Santoprene®	Polypropylene	EPDM	SS	17 (7.7)	212 (100)	Pg. 74	NPT (BSP)
AVD-05	Viton®	Viton®	Nylon	Viton®	SS	17 (7.7)	212 (100)	Pg. 74	NPT (BSP)

1/2" - 316 SS - Corrosion resistant steel, suitable for nitric acid, chlorinated solvents, caustics and marine applications. Please consult chemical compatibility tables or www.all-flo.com for your particular application.

PART NUMBER	DIAPHRAGM MATERIAL	VALVE/BALL MATERIAL	VALVE SEAT MATERIAL	O-RING MATERIAL	FASTENER MATERIAL	WEIGHT LBS (KG)	MAX TEMPERATURE °F (°C)	DIMENSIONAL DIAGRAM	CONNECT TYPE
SND-05	Geolast®	Nitrile	SS	Nitrile	SS	26 (11.8)	180 (82)	Pg. 74	NPT (BSP)
SBD-05	Geolast®	Geolast®	SS	Nitrile	SS	26 (11.8)	180 (82)	Pg. 74	NPT (BSP)
SPD-05	PTFE	PTFE	SS	PTFE	SS	26 (11.8)	212 (100)	Pg. 74	NPT (BSP)
SED-05	Santoprene®	Santoprene®	SS	EPDM	SS	26 (11.8)	212 (100)	Pg. 74	NPT (BSP)
SVD-05	Viton®	Viton®	SS	Viton®	SS	26 (11.8)	212 (100)	Pg. 74	NPT (BSP)

1/2" - POLYPROPYLENE - A non-metallic material, suitable for water, caustics, soap solutions, mild acids and general purpose applications. Please consult chemical compatibility tables or www.all-flo.com for your particular application.

PART NUMBER	DIAPHRAGM MATERIAL	VALVE/BALL MATERIAL	VALVE SEAT MATERIAL	O-RING MATERIAL	FASTENER MATERIAL	WEIGHT LBS (KG)	MAX TEMPERATURE °F (°C)	DIMENSIONAL DIAGRAM	CONNECT TYPE
PND-05	Geolast®	Nitrile	Polypropylene	Nitrile	SS	16 (7.3)	150 (66)	Pg. 74	NPT (BSP)
PBD-05	Geolast®	Geolast®	Polypropylene	Nitrile	SS	16 (7.3)	150 (66)	Pg. 74	NPT (BSP)
PTD-05	PTFE	PTFE	Polypropylene	PTFE	SS	16 (7.3)	150 (66)	Pg. 74	NPT (BSP)
PED-05	Santoprene®	Santoprene®	Polypropylene	EPDM	SS	16 (7.3)	150 (66)	Pg. 74	NPT (BSP)
PVD-05	Viton®	Viton®	Polypropylene	Viton®	SS	16 (7.3)	150 (66)	Pg. 74	NPT (BSP)

1/2" - PVDF - Polyvinylidene Fluoride suitable in applications requiring the highest purity, strength, and resistance to solvents, acids, and bases. Please consult chemical compatibility tables or www.all-flo.com for your particular application.

PART NUMBER	DIAPHRAGM MATERIAL	VALVE/BALL MATERIAL	VALVE SEAT MATERIAL	O-RING MATERIAL	FASTENER MATERIAL	WEIGHT LBS (KG)	MAX TEMPERATURE °F (°C)	DIMENSIONAL DIAGRAM	CONNECT TYPE
KTD-05	PTFE	PTFE	PVDF	PTFE	SS	12 (5.4)	200 (93)	Pg. 74	NPT (BSP)
KED-05	Santoprene®	Santoprene®	PVDF	EPDM	SS	12 (5.4)	200 (93)	Pg. 74	NPT (BSP)
KVD-05	Viton®	Viton®	PVDF	Viton®	SS	12 (5.4)	200 (93)	Pg. 74	NPT (BSP)

1/2" - NYLON - A non-metallic material, suitable for most solvents and oils. Please consult chemical compatibility tables or www.all-flo.com for your particular application.

PART NUMBER	DIAPHRAGM MATERIAL	VALVE/BALL MATERIAL	VALVE SEAT MATERIAL	O-RING MATERIAL	FASTENER MATERIAL	WEIGHT LBS (KG)	MAX TEMPERATURE °F (°C)	DIMENSIONAL DIAGRAM	CONNECT TYPE
NND-05	Geolast®	Nitrile	PVDF	Nitrile	SS	16 (7.3)	150 (66)	Pg. 74	NPT (BSP)
NBD-05	Geolast®	Geolast®	PVDF	Nitrile	SS	16 (7.3)	150 (66)	Pg. 74	NPT (BSP)
NTD-05	PTFE	PTFE	PVDF	PTFE	SS	16 (7.3)	150 (66)	Pg. 74	NPT (BSP)
NVD-05	Viton®	Viton®	PVDF	Viton®	SS	16 (7.3)	150 (66)	Pg. 74	NPT (BSP)

1/2" - CONDUCTIVE NYLON - Stainless steel filled nylon, suitable for most solvents and alcohols. Grounding lugs provided with pump. Please consult chemical compatibility tables or www.all-flo.com for your particular application.

PART NUMBER	DIAPHRAGM MATERIAL	VALVE/BALL MATERIAL	VALVE SEAT MATERIAL	O-RING MATERIAL	FASTENER MATERIAL	WEIGHT LBS (KG)	MAX TEMPERATURE °F (°C)	DIMENSIONAL DIAGRAM	CONNECT TYPE
CND-05	Geolast®	Nitrile	SS	Nitrile	SS	19 (8.6)	150 (66)	Pg. 74	NPT (BSP)
CBD-05	Geolast®	Geolast®	SS	Nitrile	SS	19 (8.6)	150 (66)	Pg. 74	NPT (BSP)
CTD-05	PTFE	PTFE	SS	PTFE	SS	19 (8.6)	150 (66)	Pg. 74	NPT (BSP)
CVD-05	Viton®	Viton®	SS	Viton®	SS	19 (8.6)	150 (66)	Pg. 74	NPT (BSP)

AVAILABLE OPTIONS - Each pump can be configured to suit a particular application. Please see the options section for detailed product information on the following available options.

AIR VALVE OPTIONS	SEE PAGE 67	
CYCLE COUNT VALVE	SOLENOID ADAPTOR VALVE	
BALL VALVE OPTIONS	SEE PAGE 67	
GEOLAST®	PTFE	
SANTOPRENE®	STAINLESS STEEL	
WETTED CHAMBER FINISH OPTIONS	SEE PAGE 67	
HARD COAT ANODIZING		
PASSIVATED & ELECTROPOLISHED		
HARDWARE OPTIONS	SEE PAGE 67	
PTFE COATED HARDWARE		
O-RINGS	SEE PAGE 67	
PTFE O-RINGS	NITRILE O-RINGS	
EPDM O-RINGS	VITON® O-RINGS	
PORTING OPTIONS	SEE PAGE 68	
DUAL DISCHARGE / SUCTION	ALL PORTS OPEN	
SUCTION / DOWN		
VALVE SEAT OPTIONS	SEE PAGE 68	
POLYPROPYLENE	NYLON	
PVDF	STAINLESS STEEL	
MAX PASS VALVE SOLIDS HANDLING OPTIONS	SEE PAGE 68	
NITRILE	EPDM	FDA VITON®
MISC. AND SPECIAL OPTIONS	SEE PAGE 68	
ATEX CATEGORY 2		

AVAILABLE ACCESSORIES - Please see the accessories section for detailed product information on the following available accessories.

AIR	SEE PAGE
FILTER / REGULATOR / GAUGE	60
SOLENOID VALVES	60
AIR FLOW CONTROL VALVES	60
NEEDLE VALVE	60
LIQUID	
SUCTION STRAINER	61
FILTER HOUSING	61
PUMP	
PREMIUM MUFFLER	63
METAL MUFFLER	63
GROUNDING LUG	64



METALLIC

All of our 1/2" metallic pumps have a non-metallic center section. This design concept ensures maximum chemical compatibility while protecting from environmental corrosion.



CONDUCTIVE NYLON

Our conductive nylon pumps achieve desired chemical compatibility while providing grounding capability for safe operation.



NON-METALLIC

Our non-metallic pumps are available in a variety of materials and porting options, allowing for maximum application installation.