

Filter / Regulator-Lubricator

Numbering System

= "Most Popular"

Unit Function

D

Unit Function

D FR + L

Family

03

Family

03 Miniature

Thread Type

0

Thread Type

0 NPT
C BSPP

Pipe Size

1

Pipe Size

1 1/8"
2 1/4"

Options

0

Options

0

Options

0

Options

0

Options

0 Standard

D Piston Drain

G* Pressure Gauge

L 1 to 60 PSI, Relieving

M Metal Bowl

N 2 to 125 PSI, Non-Relieving

P 1 to 30 PSI, Relieving

Q 1 to 15 PSI, Relieving

S 1 to 60 PSI, Non-Relieving

T 1 to 30 PSI, Non-Relieving

U 1 to 15 PSI, Non-Relieving

Note: When selecting from the options columns, please enter letters in alphabetical order for positions 6, 7, 8, and 9.
For example: **M 0 3 - 0 1 - D M 0 0**

NOTE: 0000 in position 6, 7, 8 and 9 signifies standard product.
(Poly Bowl, Manual Drain on Filter, no Drain on Lubricator, 2 to 125 PSIG, Relieving)

* Not available with BSPP thread type.

Filters, Regulators, Lubricators

B

Unit Function

C

Unit Function / Family

CB7 FR+L Compact

Family

B

Thread Type

0

Thread Type

0 NPT
C BSPP

Pipe Size

3

Pipe Size

2 1/4
3 3/8"
4 1/2"

Options

0

Options

0

Options

0

Options

0 Standard

E Minus End Blocks and Sleeves

F Auto Drain

G Metal Bowl with Sight Gauge

L Low Pressure

M Metal Bowl

N Non-Relieving Diaphragm

NOTE: When selecting from the options columns, please enter letters in alphabetical order for positions 6, 7, 8.
For example: **C B 7 - 0 3 - 0 0 0**

"F" Series Filters, Type "A" 5 micron elements: All Wilkerson Type "A" 5 micron elements meet or exceed ISO Class 3 for maximum particle size and concentration of solid contaminants.

Note: All classes above refer to International Standards Organization (ISO) standard 8573-1, pertaining to maximum particle size and concentration of solid contaminants, and maximum oil content.

NOTE: When selecting from the options columns, please enter letters in alphabetical order for positions 6, 7, 8.
For example:

C B 7 - 0 3 - 0 0 0

WILKERSON®

B223

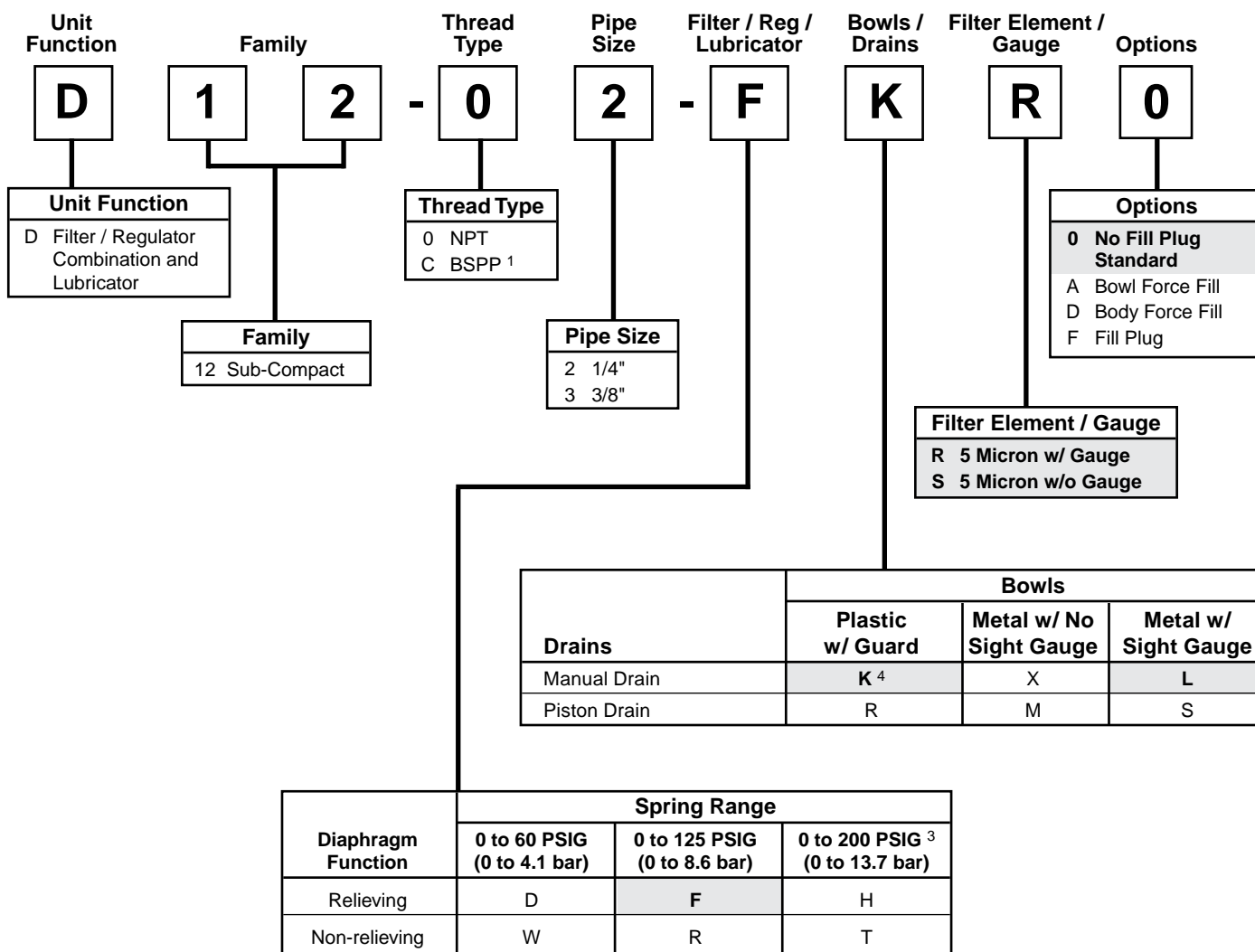
Pneumatic Division
Richland, Michigan
www.wilkersoncorp.com

Filter / Regulator-Lubricator Numbering System

 = "Most Popular"

B

Filters, Regulators, Lubricators



¹ ISO, R228 (G Series)

³ 0 to 200 PSI (0 to 13,8 bar) pressure range available only on units with metal bowl.

⁴ Filter bowl selection only. Lubricator bowl material same as filter bowl (plastic or metal). Plastic lubricator bowl comes with closed end bowl as standard. Metal lubricator bowl comes with manual drain standard.

NOTE: When selecting from the options columns, please enter letters in alphabetical order for positions 7, 8, 9.
For example:

D 1 2 - 0 2 - F K R 0

"F" Series Filters, Type "A" 5 micron elements: All Wilkerson Type "A" 5 micron elements **meet or exceed** ISO Class 3 for maximum particle size and concentration of solid contaminants.

NOTE: All classes above refer to International Standards Organization (ISO) standard 8573-1, pertaining to maximum particle size and concentration of solid contaminants, and maximum oil content.

Filter / Regulator-Lubricator Numbering System

 = "Most Popular"

Unit Function	Family	Thread Type	Pipe Size	Filter / Reg - Lubricator	Bowls / Drains	Options	Options																																														
D	1 8	- 0	3	- F	K	G	0																																														
Unit Function D Filter / Regulator Combination and Lubricator	Family 08 Miniature 18 Compact 28 Standard 39 Jumbo	Thread Type 0 NPT C BSPP ³	<table border="1" style="width: 100%; border-collapse: collapse;"> <thead> <tr> <th rowspan="2">Code</th> <th rowspan="2">Pipe Size</th> <th colspan="4">Series</th> </tr> <tr> <th>08</th> <th>18</th> <th>28</th> <th>39</th> </tr> </thead> <tbody> <tr><td>1</td><td>1/8"</td><td>X</td><td></td><td></td><td></td></tr> <tr><td>2</td><td>1/4"</td><td>X</td><td>X</td><td></td><td></td></tr> <tr><td>3</td><td>3/8"</td><td></td><td>X</td><td>X</td><td></td></tr> <tr><td>4</td><td>1/2"</td><td></td><td>X</td><td>X</td><td></td></tr> <tr><td>6</td><td>3/4"</td><td></td><td></td><td>X</td><td>X</td></tr> <tr><td>8</td><td>1"</td><td></td><td></td><td></td><td>X</td></tr> </tbody> </table>	Code	Pipe Size	Series				08	18	28	39	1	1/8"	X				2	1/4"	X	X			3	3/8"		X	X		4	1/2"		X	X		6	3/4"			X	X	8	1"				X			Options 0 None B Add End Blocks ¹ C Tamper Resistant Regulator Kit ^{1, 2} D Force Fill Adapter ¹ G Pressure Gauge P Metal Panel Nut ¹ V Fluorocarbon ¹	Options 0 None B Add End Blocks ¹ C Tamper Resistant Regulator Kit ^{1, 2} D Force Fill Adapter ¹ G Pressure Gauge P Metal Panel Nut ¹ V Fluorocarbon ¹
Code	Pipe Size	Series																																																			
		08	18	28	39																																																
1	1/8"	X																																																			
2	1/4"	X	X																																																		
3	3/8"		X	X																																																	
4	1/2"		X	X																																																	
6	3/4"			X	X																																																
8	1"				X																																																
<table border="1" style="width: 100%; border-collapse: collapse;"> <thead> <tr> <th colspan="6">Spring Range</th> </tr> <tr> <th>Diaphragm Function</th> <th>Fluorocarbon</th> <th>0 to 30 PSIG ¹ (0 to 2.1 bar)</th> <th>0 to 60 PSIG ¹ (0 to 4.1 bar)</th> <th>0 to 125 PSIG (0 to 8.6 bar)</th> <th>0 to 250 PSIG ^{1, 5} (0 to 17.2 bar)</th> </tr> </thead> <tbody> <tr> <td rowspan="2">Relieving</td> <td>No</td> <td>C</td> <td>D</td> <td style="background-color: #e0e0e0;">F</td> <td>G</td> </tr> <tr> <td>Yes</td> <td>J</td> <td>K</td> <td>L¹</td> <td>M</td> </tr> <tr> <td rowspan="2">Non-relieving ¹</td> <td>No</td> <td>P</td> <td>W</td> <td>R</td> <td>S</td> </tr> <tr> <td>Yes</td> <td>V</td> <td>X</td> <td>Y</td> <td>Z</td> </tr> </tbody> </table>								Spring Range						Diaphragm Function	Fluorocarbon	0 to 30 PSIG ¹ (0 to 2.1 bar)	0 to 60 PSIG ¹ (0 to 4.1 bar)	0 to 125 PSIG (0 to 8.6 bar)	0 to 250 PSIG ^{1, 5} (0 to 17.2 bar)	Relieving	No	C	D	F	G	Yes	J	K	L ¹	M	Non-relieving ¹	No	P	W	R	S	Yes	V	X	Y	Z												
Spring Range																																																					
Diaphragm Function	Fluorocarbon	0 to 30 PSIG ¹ (0 to 2.1 bar)	0 to 60 PSIG ¹ (0 to 4.1 bar)	0 to 125 PSIG (0 to 8.6 bar)	0 to 250 PSIG ^{1, 5} (0 to 17.2 bar)																																																
Relieving	No	C	D	F	G																																																
	Yes	J	K	L ¹	M																																																
Non-relieving ¹	No	P	W	R	S																																																
	Yes	V	X	Y	Z																																																
<table border="1" style="width: 100%; border-collapse: collapse;"> <thead> <tr> <th rowspan="2">Drains</th> <th colspan="2">Bowls</th> </tr> <tr> <th>Plastic w / Guard ¹ Nitrile Standard</th> <th>Metal w / Sight Gauge ⁴ Nitrile Standard</th> </tr> </thead> <tbody> <tr> <td>None ¹</td> <td>C</td> <td>D</td> </tr> <tr> <td>Automatic Drain ⁵</td> <td style="background-color: #e0e0e0;">G</td> <td>H</td> </tr> <tr> <td>Manual Drain</td> <td style="background-color: #e0e0e0;">K</td> <td>L</td> </tr> <tr> <td>Piston Drain (08 Series Only)</td> <td>R</td> <td>S</td> </tr> </tbody> </table>								Drains	Bowls		Plastic w / Guard ¹ Nitrile Standard	Metal w / Sight Gauge ⁴ Nitrile Standard	None ¹	C	D	Automatic Drain ⁵	G	H	Manual Drain	K	L	Piston Drain (08 Series Only)	R	S																													
Drains	Bowls																																																				
	Plastic w / Guard ¹ Nitrile Standard	Metal w / Sight Gauge ⁴ Nitrile Standard																																																			
None ¹	C	D																																																			
Automatic Drain ⁵	G	H																																																			
Manual Drain	K	L																																																			
Piston Drain (08 Series Only)	R	S																																																			

B

Filters, Regulators, Lubricators

¹ Not Available on 39 Series.² Tamper resistant kit not installed. Kit shipped loose in carton.³ ISO, R228 (G Series).⁴ 08 series has all metal bowl (no sight gauge).⁵ Not Available on 08 Series.

"F" Series Filters, Type "A" 5 micron elements: All Wilkerson Type "A" 5 micron elements **meet or exceed** ISO Class 3 for maximum particle size and concentration of solid contaminants.

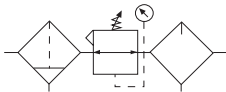
Note: All classes above refer to International Standards Organization (ISO) standard 8573-1, pertaining to maximum particle size and concentration of solid contaminants, and maximum oil content.

NOTE: When selecting from the options columns, please enter letters in alphabetical order for positions 7, 8, 9.
For example:

D 1 8 - 0 3 - F K G 0

Combination

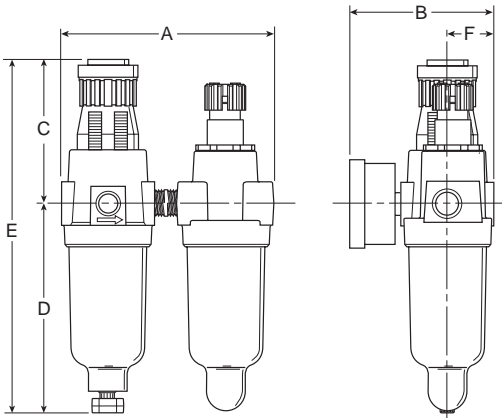
D03

 = "Most Popular"

D03-02-0000

Features

- Excellent Water Removal Efficiency
- Unbalanced Poppet Standard
- Solid Control Piston for Extended Life
- Non-rising Adjustment Knob
- Two Full Flow 1/8" Gauge Ports
- Proportional Oil Delivery over a Wide Range of Air Flows
- Precision Needle Valve Assures Repeatable Oil Delivery and Provides Simple Adjustment of Delivery Rate
- Ideal for Low and Light flow Applications with Changing Air Flow
- Transparent Sight Dome for 360° Visibility



Dimensions

Model	Inches (mm)	A	B	C	D	E	F
Standard Unit D03-XX-XXXX		3.75 (95)	2.83 (71.9)	2.42 (61)	3.79 (96)	6.21 (158)	.79 (20)

Specifications

Flow Capacity*	1/8	20 SCFM (9.4 dm³/s)
	1/4	20 SCFM (9.4 dm³/s)
Gauge Ports (2)	1/8	
Minimum Flow for Lubrication	0.7 SCFM at 100 PSIG	
Port Threads	1/8, 1/4	
Pressure & Temperature Ratings –		
Plastic Bowl	0 to 150 PSIG (0 to 10.3 bar) 32°F to 125°F (0°C to 52°C)	
Metal Bowl	0 to 250 PSIG (0 to 17.2 bar) 32°F to 175°F (0°C to 80°C)	
Secondary Pressure Ranges –		
Standard Pressure	2 to 125 PSIG (0 to 8.6 bar)	
Medium Pressure	1 to 60 PSIG (0 to 4.1 bar)	
Medium Pressure	1 to 30 PSIG (0 to 2.1 bar)	
Low Pressure	1 to 15 PSIG (0 to 1.0 bar)	
Weight	.9 lb. (.36 kg)	

* Inlet pressure 100 PSIG (6.9 bar). Secondary pressure 90 PSIG (6.2 bar).


“F” Series Filters, Type “A” 5 micron elements: All Wilkerson Type “A” 5 micron elements **meet or exceed ISO** Class 3 for maximum particle size and concentration of solid contaminants.

Materials of Construction

Adjusting Nut	Brass
Adjusting Stem & Spring	Steel
Body	Zinc
Bonnet, Knob, Seat, Piston, Holder & Deflector	Plastic
Bowls –	
Transparent	Polycarbonate
Metal (Without Sight Gauge)	Zinc
Filter Elements – 5 Micron (Standard)	Plastic
Manual Drain –	
Body & Stem	Plastic
Seals	Nitrile
Piston Drain –	
Piston & Seals	Nitrile
Stem, Seat, Adaptor & Washers	Aluminum
Seals	Nitrile
Sight Dome	Polycarbonate
Suggested Lubricant	Airline Oil F442001

= “Most Popular”

Note: For Kits and Repair Parts, see individual pages for Filters, Regulators, and Lubricators.

 **WARNING**

Product rupture can cause serious injury.
Do not connect regulator to bottled gas.
Do not exceed maximum primary pressure rating.

CAUTION:

REGULATOR PRESSURE ADJUSTMENT – The working range of knob adjustment is designed to permit outlet pressures within their full range. Pressure adjustment beyond this range is also possible because the knob is not a limiting device. This is a common characteristic of most industrial regulators, and limiting devices may be obtained only by special design.

For best performance, regulated pressure should always be set by increasing the pressure up to the desired setting.

B

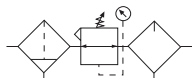
Filters, Regulators, Lubricators

Ordering Information

Model Type	Port Size	Plastic Bowl with Gauge	Metal Bowl with Gauge
Manual Drain	1/8	D03-01-G000	D03-01-GM00
	1/4	D03-02-G000	D03-02-GM00

Options - To order an option supplied with the unit model, add the appropriate coded suffix letter in the designated position of the model number.

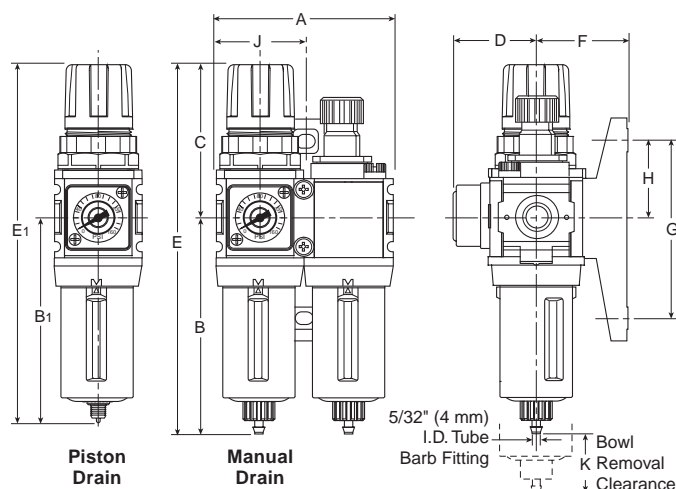
Combination D08



D08-02-FKG0

Features

- Components Integrated into Single Unit
- Modern Design and Appearance
- Light Weight, Ready-to-Mount Assembly Comes Standard with Flush-Mount Pressure Gauge and Modular T-Bracket / Joiner Assembly
- High Flow Capacity
- Quick-Disconnect Bowl / Bowl Guard



Dimensions

Models	Inches (mm)	A	B	B ₁	C	D	E	E ₁	F	G	H	J	K
Standard Unit D08-XX-FKG0		3.15 (80)	3.86 (98)	—	2.60 (66)	1.47 (37)	6.46 (164)	—	1.61 (41)	3.15 (80)	1.37 (35)	1.57 (40)	1.31 (33)
Piston Drain D08-XX-FKG0		3.15 (80)	—	3.64 (93)	2.60 (66)	1.47 (37)	—	6.24 (159)	1.61 (41)	3.15 (80)	1.37 (35)	1.57 (40)	1.31 (33)

Specifications

Flow Capacity*	1/8	29 SCFM (13.7 dm ³ /s)
	1/4	44 SCFM (20.8 dm ³ /s)
Gauge Port (2)**	NPT	1/8
Maximum Supply Pressure	Plastic Bowl	150 PSIG (10.3 bar)
	Metal Bowl	250 PSIG (17.2 bar)
Operating Temperature	Plastic Bowl	14° to 125°F (-10° to 52°C)
	Metal Bowl	14° to 150°F (-10° to 65.5°C)
Port Size	NPT / BSPP-G	1/8, 1/4
Standard Filtration		5 Micron
Weight		1.43 lb. (0.6 kg)

* Inlet pressure 100 PSIG (6.9 bar). Secondary pressure 90 PSIG (6.2 bar).

** Non-gauge option only.

“F” Series Filters, Type “A” 5 micron elements: All Wilkerson Type “A” 5 micron elements **meet or exceed ISO Class 3** for maximum particle size and concentration of solid contaminants.

Materials of Construction

Body	Zinc	
Bonnet	PBT	
Bowls	Plastic Bowl	Polycarbonate
	Metal Bowl	Zinc
Diaphragm Assembly	Brass / Nitrile	
Filter Element	Polyethylene	
Knob	Acetal	
Seals	Plastic Bowl	Nitrile
	Metal Bowl	Nitrile
Sight Dome	Polycarbonate	
Springs	Steel	
Suggested Lubricant	Airline Oil F442001	
Valve	Brass / Nitrile	

 = "Most Popular"

Note: For Kits and Repair Parts, see individual pages for Filters, Regulators, and Lubricators.

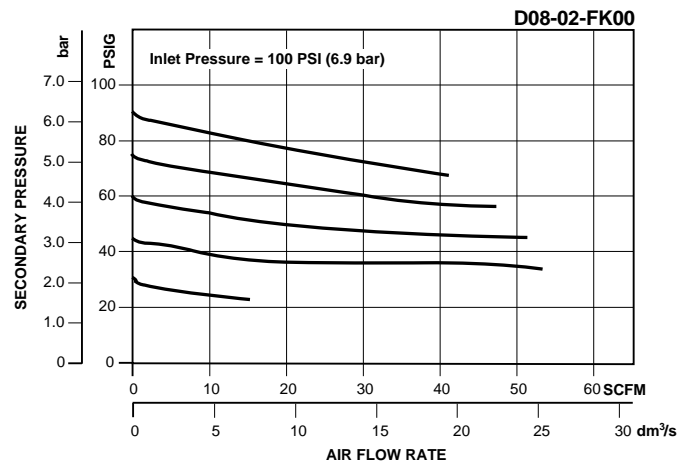
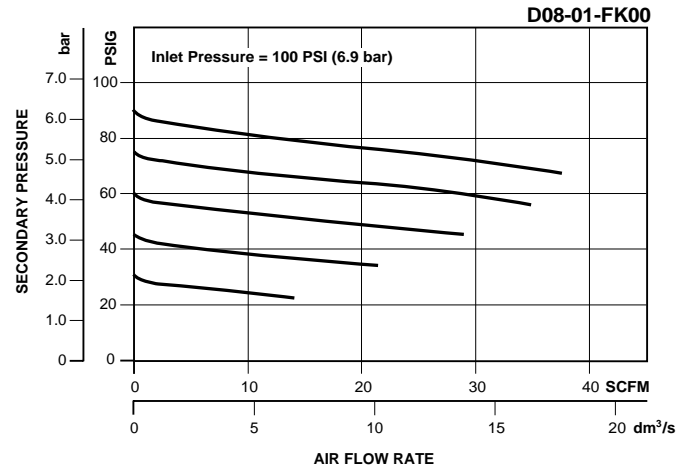
WARNING

Product rupture can cause serious injury.
Do not connect regulator to bottled gas.
Do not exceed maximum primary pressure rating.

CAUTION:

REGULATOR PRESSURE ADJUSTMENT – The working range of knob adjustment is designed to permit outlet pressures within their full range. Pressure adjustment beyond this range is also possible because the knob is not a limiting device. This is a common characteristic of most industrial regulators, and limiting devices may be obtained only by special design.

For best performance, regulated pressure should always be set by increasing the pressure up to the desired setting.



B

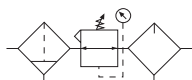
Filters, Regulators, Lubricators

Ordering Information

Model	Port Size	Plastic Bowl w / Plastic Bowl Guard 0 to 125 PSI (0 to 8.6 bar) Without Gauge	Plastic Bowl w / Plastic Bowl Guard 0 to 125 PSI (0 to 8.6 bar) With Gauge	Metal Bowl 0 to 125 PSI (0 to 8.6 bar) Without Gauge	Metal Bowl w / 0 to 125 PSI (0 to 8.6 bar) With Gauge
Manual Drain	1/8	D08-01-FK00	D08-01-FKG0	D08-01-FL00	D08-01-FLG0
	1/4	D08-02-FK00	D08-02-FKG0	D08-02-FL00	D08-02-FLG0
Piston Drain	1/8	D08-01-FR00	D08-01-FRG0	D08-01-FS00	D08-01-FSG0
	1/4	D08-02-FR00	D08-02-FRG0	D08-02-FS00	D08-02-FSG0

Options - To order an option supplied with the unit model, add the appropriate coded suffix letter in the designated position of the model number.

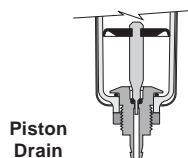
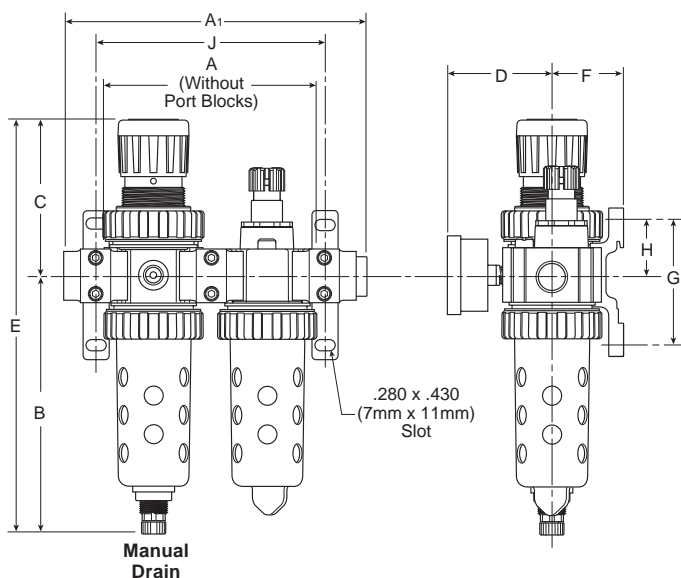
Combination D12



D12-02-FKS0

Features

- See Individual Component Pages for Details
- Port Blocks, Manifold Block, Ball Valve and Wall Bracket Must Be Ordered Separately



NOTE: Barb
(Piston Drain)
accepts
3/16" ID tubing.

Dimensions

Model	Inches (mm)	A	A ₁	B	C	D	E	F	G	H	J
Standard Unit D12-XX-FKS0		4.33 (110)	6.38 (162)	5.35 (136)	3.15 (80)	2.05 (52)	8.50 (216)	1.45 (37)	2.60 (66)	1.14 (29)	4.72 (120)
Piston Drain D12-XX-FRS0		4.33 (110)	6.38 (162)	5.35 (136)	3.15 (80)	2.05 (52)	8.50 (216)	1.45 (37)	2.60 (66)	1.14 (29)	4.72 (120)

Specifications

Flow Capacity*	1/4	40 SCFM (18.9 dm ³ /s)
	3/8	40 SCFM (18.9 dm ³ /s)
Gauge Ports (2)	NPT / BSPP-G 1/4	
Maximum Supply Pressure	Plastic Bowl	150 PSIG (10.3 bar)
	Metal Bowl	250 PSIG (17.2 bar)
Operating Temperature	Plastic Bowl	32° to 125°F (0° to 52°C)
	Metal Bowl	32° to 175°F (0° to 80°C)
Port Size	NPT / BSPP-G 1/4, 3/8	
Weight	2.50 lb. (1.13 kg)	


* Inlet pressure 100 PSIG (6.9 bar). Secondary pressure 90 PSIG (6.2 bar).

Materials of Construction

Body	Zinc	
Bowl Guard	Steel	
Bowls	Plastic Bowl	Polycarbonate
	Metal Bowl	Zinc
Collar	Plastic	
Drain-Manual	Body & Nut	Plastic
Seals	Nitrile	
Sight Dome	Polycarbonate	
Sight Gauge	Metal Bowl	Polyamide (Nylon)
Suggested Lubricant	Airline Oil F442001	

= “Most Popular”

Note: For Kits and Repair Parts, see individual pages for Filters, Regulators, and Lubricators.



WARNING

Product rupture can cause serious injury.
Do not connect regulator to bottled gas.
Do not exceed maximum primary pressure rating.

CAUTION:

REGULATOR PRESSURE ADJUSTMENT – The working range of knob adjustment is designed to permit outlet pressures within their full range. Pressure adjustment beyond this range is also possible because the knob is not a limiting device. This is a common characteristic of most industrial regulators, and limiting devices may be obtained only by special design.

For best performance, regulated pressure should always be set by increasing the pressure up to the desired setting.

B

Filters, Regulators, Lubricators

Ordering Information

Model	Port Size	Plastic Bowl w / Plastic Bowl Guard 0 to 125 PSI (0 to 8.6 bar) Without Gauge	Plastic Bowl w / Plastic Bowl Guard 0 to 125 PSI (0 to 8.6 bar) With Gauge	Metal Bowl 0 to 125 PSI (0 to 8.6 bar) Without Gauge	Metal Bowl 0 to 125 PSI (0 to 18.6 bar) With Gauge
Manual Drain	1/4	D12-02-FKS0	D12-02-FKR0	D12-02-FLS0	D12-02-FLR0
	3/8	D12-03-FKS0	D12-03-FKR0	D12-03-FLS0	D12-03-FLR0
Piston Drain	1/4	D12-02-FRS0	D12-02-FRR0	D12-02-FSS0	D12-02-FSR0
	3/8	D12-03-FRS0	D12-03-FRR0	D12-03-FSS0	D12-03-FSR0

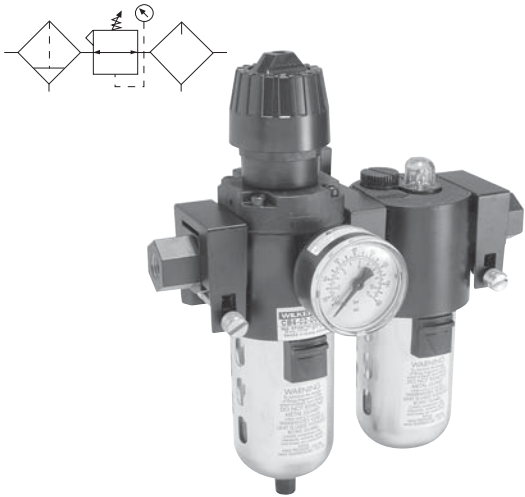
Options - To order an option supplied with the unit model, add the appropriate coded suffix letter in the designated position of the model number.

Combination CB7

 = "Most Popular"

B

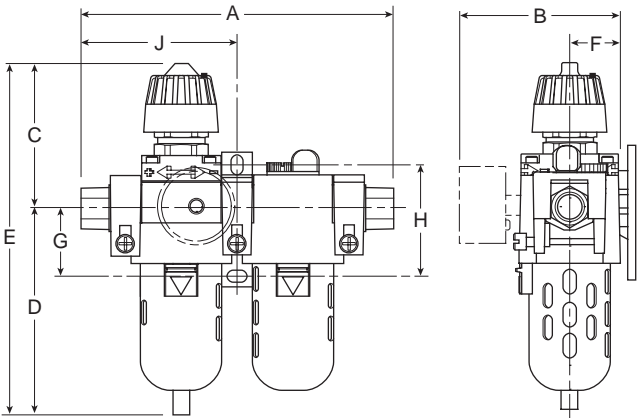
Filters, Regulators, Lubricators



CB7-02-000

Features

- Components Integrated into Single Unit
- Metal Bowl with Sight Gauge Option
- Pressure Gauge Standard
- Integral Plastic Bowl / Bowl Guard
- Quick Disconnect Bowl
- Standard Self-relieving



Dimensions

Model	Inches (mm)	A	B	C	D	E	F	G	H	J
Standard Unit With End Blocks CB7-XX-000		8.35 (212)	4.18 (106)	3.95 (44)	5.43 (137.9)	9.38 (238)	1.34 (34)	1.73 (44)	2.98 (75.7)	4.17 (76)
Without End Blocks CB7-XX-E00		6.00 (152)	4.71 (120)	3.95 (44)	5.43 (137.9)	9.38 (238)	1.75 (44)	1.73 (44)	2.98 (75.7)	3.00 (76)

Specifications

Flow Capacity*	1/4	36.1 SCFM (17.0 dm³/s)
	3/8	58.5 SCFM (27.6 dm³/s)
	1/2	64.0 SCFM (30.2 dm³/s)
Gauge Ports (2)	NPT / BSPP-G	1/4
Port Threads	NPT	1/4, 3/8, 1/2
Pressure & Temperature Ratings –		
Plastic Bowl	0 to 150 PSIG (0 to 10.3 bar) 32°F to 125°F (0°C to 52°C)	
Metal Bowl	0 to 200 PSIG (0 to 14 bar) 32°F to 175°F (0°C to 80°C)	
Weight	5.58 lb. (2.5 kg)	


* Inlet pressure 150 PSIG (10.3 bar). Pressure drop 5 PSID (0.3 bar).

“F” Series Filters, Type “A” 5 micron elements: All Wilkerson Type “A” 5 micron elements **meet or exceed ISO Class 3** for maximum particle size and concentration of solid contaminants.

Materials of Construction

Body	Zinc
Bonnet, Knob	PBT
Bowls –	
Transparent	Polycarbonate
Metal	Zinc
Diaphragm	Nitrile / Zinc
Drain Stem	Acetal / Polycarbonate
Filter Elements	Polypropylene
Manual Drain –	
Body & Stem	Plastic
Seals	Nitrile
Piston Drain –	
Piston & Seals	Nitrile
Stem, Seat, Adaptor & Washers	Aluminum
Seals –	
Transparent	Nitrile
Metal	Fluorocarbon
Sight Dome	Nylon
Springs	Steel
Stem, Element Retainer and Deflector	Acetal
Suggested Lubricant	Airline Oil F442001

Note: For Kits and Repair Parts, see individual pages for Filters, Regulators, and Lubricators.



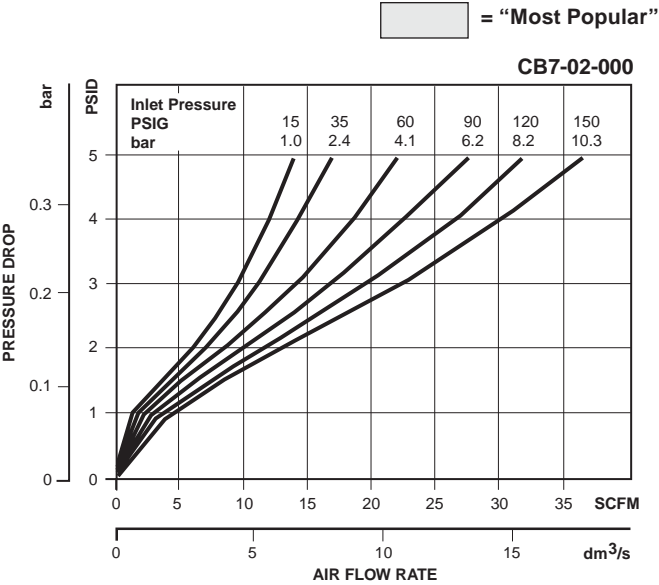
WARNING

Product rupture can cause serious injury.
Do not connect regulator to bottled gas.
Do not exceed maximum primary pressure rating.

CAUTION:

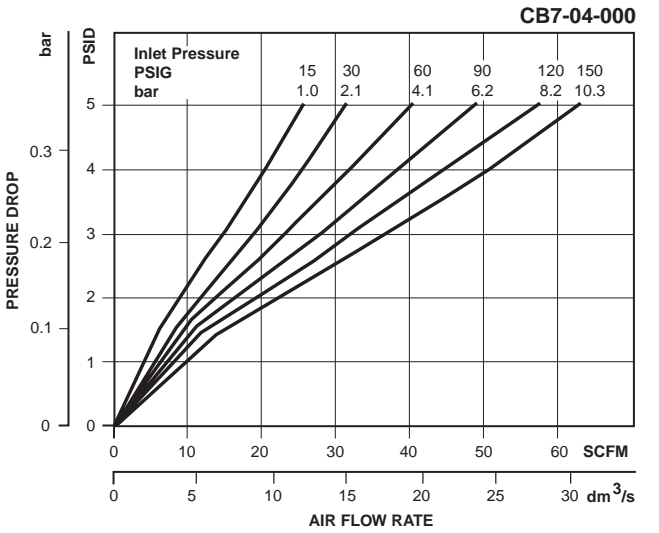
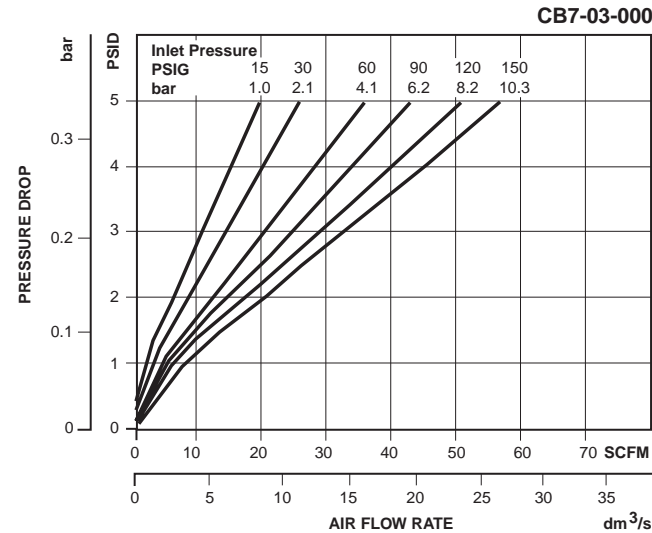
REGULATOR PRESSURE ADJUSTMENT – The working range of knob adjustment is designed to permit outlet pressures within their full range. Pressure adjustment beyond this range is also possible because the knob is not a limiting device. This is a common characteristic of most industrial regulators, and limiting devices may be obtained only by special design.

For best performance, regulated pressure should always be set by increasing the pressure up to the desired setting.



B

Filters, Regulators, Lubricators

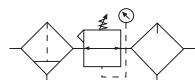


Ordering Information

Model Type	Port Size	Plastic Bowl / Bowl Guard with End Blocks 0 to 125 PSIG (0 to 8.5 bar)	Metal Bowl / Sight Gauge 0 to 125 PSIG (0 to 8.5 bar)	Plastic Bowl / Bowl Guard without End Blocks 0 to 125 PSIG (0 to 8.5 bar)	Automatic Drain 0 to 125 PSIG (0 to 8.5 bar)
CB7	1/4	CB7-02-000	CB7-02-G00	CB7-02-E00	CB7-02-F00
	3/8	CB7-03-000	CB7-03-G00	CB7-03-E00	CB7-03-F00
	1/2	CB7-04-000	CB7-04-G00	CB7-04-E00	CB7-04-F00

Options - To order an option supplied with the unit model, add the appropriate coded suffix letter in the designated position of the model number.

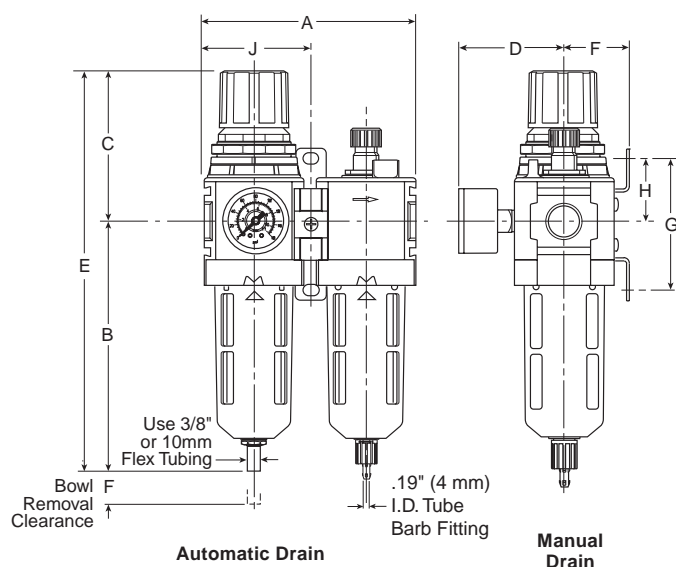
Combination D18



D18-03-FKG0

Features

- Components Integrated into Single Unit
- Modern Design and Appearance
- Light Weight, Ready-to-Mount Assembly Comes Standard with Pressure Gauge and Modular T-Bracket / Joiner Assembly
- High Flow Capacity
- Quick-Disconnect Bowl / Bowl Guard



Specifications

Flow Capacity*	1/4	100 SCFM (31.6 dm ³ /s)
	3/8	150 SCFM (49.6 dm ³ /s)
	1/2	175 SCFM (45.3 dm ³ /s)

Gauge Port (2)	NPT / BSPP-G	1/4
----------------	--------------	-----

Maximum Supply Pressure	Plastic Bowl	150 PSIG (10.3 bar)
	Metal Bowl	250 PSIG (17.2 bar)

Operating Temperature	Plastic Bowl	-13° to 125°F (-25° to 52°C)
	Metal Bowl	-13° to 150°F (-25° to 65.5°C)

Port Size	NPT / BSPP-G	1/4, 3/8, 1/2
-----------	--------------	---------------

Standard Filtration	5 Micron	
---------------------	----------	--

Weight	2.98 lb. (1.3 kg)	
--------	-------------------	--

* Inlet pressure 150 PSIG (6.9 bar). Secondary pressure 90 PSIG (6.2 bar).

“F” Series Filters, Type “A” 5 micron elements: All Wilkerson Type “A” 5 micron elements **meet or exceed ISO Class 3** for maximum particle size and concentration of solid contaminants.


Materials of Construction

Body	Zinc	
Body Cap	ABS	
Bonnet / Knob	Nylon / Acetal	
Bowls	Plastic Bowl	Polycarbonate
	Metal Bowl	Aluminum
Diaphragm Assembly	Nitrile / Zinc	
Element Retainer / Baffle and Deflector	Acetal Polypropylene	
Filter Element	5 micron	Polyethylene
Seals	Plastic Bowl	Nitrile
	Metal Bowl	Nitrile
Sight Dome	Polycarbonate	
Sight Gauge	Polyamide (Nylon)	
Springs	Main Regulating Valve	Steel Stainless Steel
Suggested Lubricant	Airline Oil F442001	
Valve Assembly	Brass / Nitrile	

Dimensions

Models	Inches (mm)	A	B	C	D	E	F	G	H	J
Standard Unit with Gauge D18-XX-FKG0		5.06 (128)	6.34 (161)	3.66 (93)	2.57 (65)	10.00 (254)	1.62 (41)	3.25 (83)	1.63 (41)	2.53 (64)
Standard Unit with Automatic Drain and Gauge D18-XX-FGG0		5.06 (128)	6.11 (155)	3.66 (93)	2.57 (65)	9.77 (248)	1.62 (41)	3.25 (83)	1.63 (41)	2.53 (64)
With End Blocks		7.74 (196)	—	—	—	—	—	—	—	3.87 (98)

Note: For Kits and Repair Parts, see individual pages for Filters, Regulators, and Lubricators.



WARNING

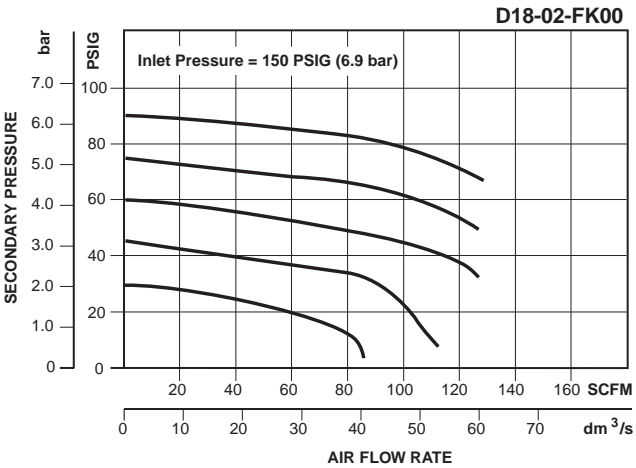
Product rupture can cause serious injury.
Do not connect regulator to bottled gas.
Do not exceed maximum primary pressure rating.

CAUTION:

REGULATOR PRESSURE ADJUSTMENT – The working range of knob adjustment is designed to permit outlet pressures within their full range. Pressure adjustment beyond this range is also possible because the knob is not a limiting device. This is a common characteristic of most industrial regulators, and limiting devices may be obtained only by special design.

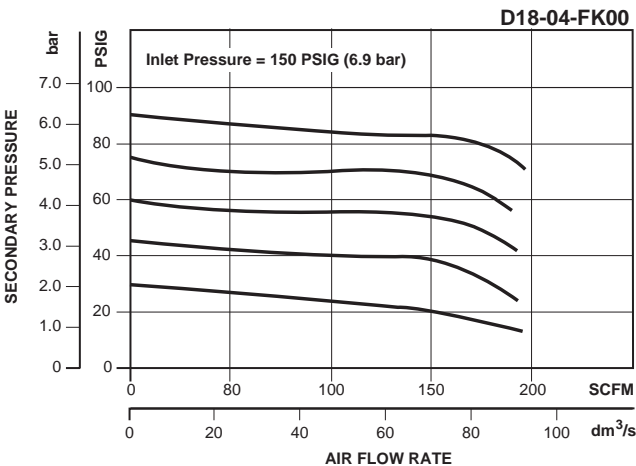
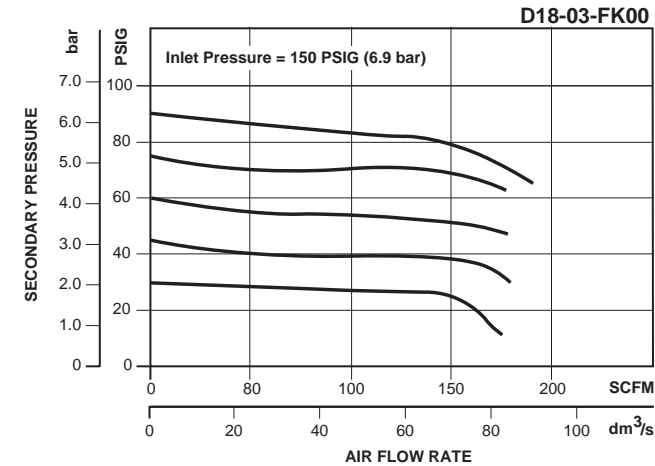
For best performance, regulated pressure should always be set by increasing the pressure up to the desired setting.

 = “Most Popular”



B

Filters, Regulators, Lubricators



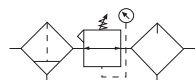
Ordering Information

Model Type	Port Size	Plastic Bowl / Bowl Guard Without Gauge 0 to 125 PSI (0 to 8.6 bar)	Plastic Bowl / Bowl Guard With Gauge 0 to 125 PSI (0 to 8.6 bar)	Metal Bowl / Sight Gauge Without Gauge 0 to 125 PSI (0 to 8.6 bar)	Metal Bowl / Sight Gauge With Gauge 0 to 125 PSI (0 to 8.6 bar)	Plastic Bowl / Bowl Guard / With Gauge With End Blocks 0 to 125 PSI (0 to 8.6 bar)
Manual Drain	1/4	D18-02-FK00	D18-02-FKG0	D18-02-FL00	D18-02-FLG0	D18-02-FKBG
	3/8	D18-03-FK00	D18-03-FKG0	D18-03-FL00	D18-03-FLG0	D18-03-FKBG
	1/2	D18-04-FK00	D18-04-FKG0	D18-04-FL00	D18-04-FLG0	D18-04-FKBG
Automatic Drain	1/4	D18-02-FG00	D18-02-FGG0	D18-02-FH00	D18-02-FHG0	D18-02-FGBG
	3/8	D18-03-FG00	D18-03-FGG0	D18-03-FH00	D18-03-FHG0	D18-03-FGBG
	1/2	D18-04-FG00	D18-04-FGG0	D18-04-FH00	D18-04-FHG0	D18-04-FGBG

Options - To order an option supplied with the unit model, add the appropriate coded suffix letter in the designated position of the model number.

Combination

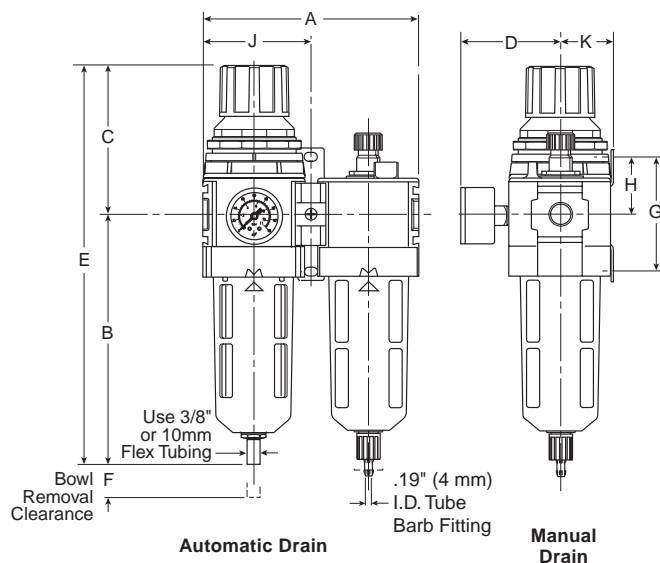
D28



D28-04-FKG0

Features

- Components Integrated into Single Unit
- Modern Design and Appearance
- Light Weight, Ready-to-Mount Assembly Comes Standard with Pressure Gauge and Modular T-Bracket / Joiner Assembly
- High Flow Capacity
- Quick-Disconnect Bowl / Bowl Guard



Dimensions

Models	Inches (mm)	A	B	C	D	E	F	G	H	J	K
Standard Unit with Gauge D28-XX-FKG0		6.10 (155)	7.34 (186)	4.10 (104)	2.82 (72)	11.44 (291)	2.00 (51)	3.25 (83)	1.63 (41)	3.05 (77)	1.53 (39)
Standard Unit with Automatic Drain and Gauge D28-XX-FGG0		6.10 (155)	7.11 (181)	4.10 (104)	2.82 (72)	11.21 (285)	2.00 (51)	3.25 (83)	1.63 (41)	3.05 (77)	1.53 (39)
With End Blocks		8.78 (223)	—	—	—	—	—	—	—	4.39 (112)	—

Specifications

Flow Capacity*	3/8	105 SCFM (49.6 dm ³ /s)
	1/2	110 SCFM (51.9 dm ³ /s)
	3/4	130 SCFM (61.4 dm ³ /s)

Maximum Supply Pressure	Plastic Bowl	150 PSIG (10.3 bar)
	Metal Bowl	250 PSIG (17.2 bar)

Operating Temperature	Plastic Bowl	-13° to 125°F (-25° to 52°C)
	Metal Bowl	-13° to 150°F (-25° to 65.5°C)

Port Size	NPT/BSPP-G	3/8, 1/2, 3/4
-----------	------------	---------------

Standard Filtration	5 Micron	
---------------------	----------	--

Weight	4.65 lb. (2.1 kg)	
--------	-------------------	--


* Inlet pressure 150 PSIG (6.9 bar). Secondary pressure 90 PSIG (6.2 bar).

“F” Series Filters, Type “A” 5 micron elements: All Wilkerson Type “A” 5 micron elements **meet or exceed ISO Class 3** for maximum particle size and concentration of solid contaminants.

Materials of Construction

Body	Zinc	
Body Cap	ABS	
Bonnet / Knob	Nylon / Acetal	
Bowls	Plastic Bowl	Polycarbonate
	Metal Bowl	Aluminum
Diaphragm Assembly	Nitrile / Zinc	
Element Retainer / Baffle and Deflector	Acetal	
	Polypropylene	
Filter Element	Polyethylene	
Seals	Plastic Bowl	Nitrile
	Metal Bowl	Nitrile
Sight Dome	Polycarbonate	
Sight Gauge	Metal Bowl	Polyamide (Nylon)
Springs	Main Regulating Valve	Steel
		Stainless Steel
Suggested Lubricant	Airline Oil F442001	
Valve Assembly	Brass / Nitrile / Acetal	

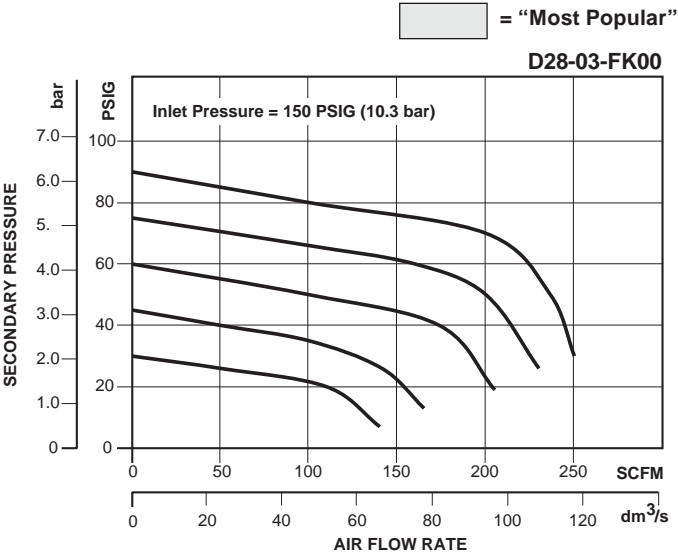
Note: For Kits and Repair Parts, see individual pages for Filters, Regulators, and Lubricators.



WARNING

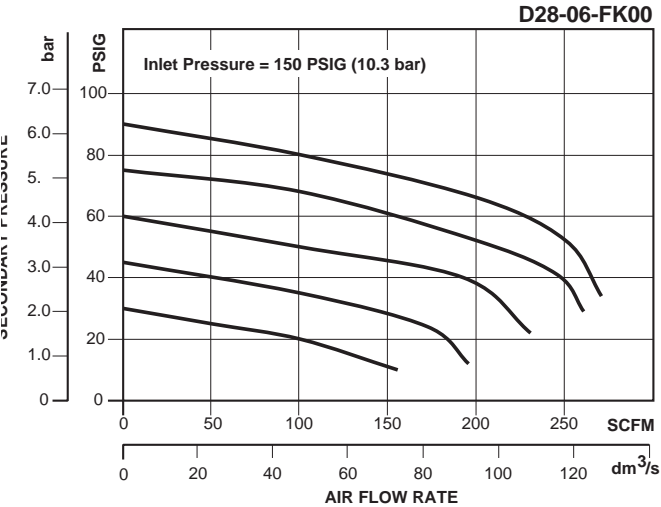
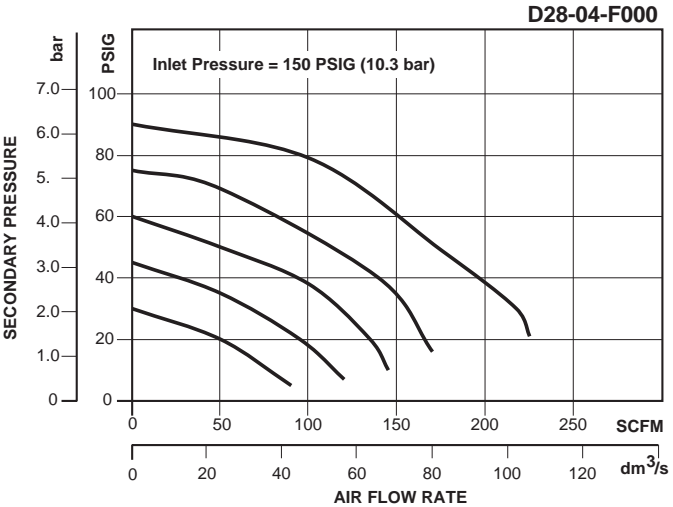
Product rupture can cause serious injury.
Do not connect regulator to bottled gas.
Do not exceed maximum primary pressure rating.

CAUTION:
REGULATOR PRESSURE ADJUSTMENT – The working range of knob adjustment is designed to permit outlet pressures within their full range. Pressure adjustment beyond this range is also possible because the knob is not a limiting device. This is a common characteristic of most industrial regulators, and limiting devices may be obtained only by special design.
For best performance, regulated pressure should always be set by increasing the pressure up to the desired setting.



B

Filters, Regulators, Lubricators

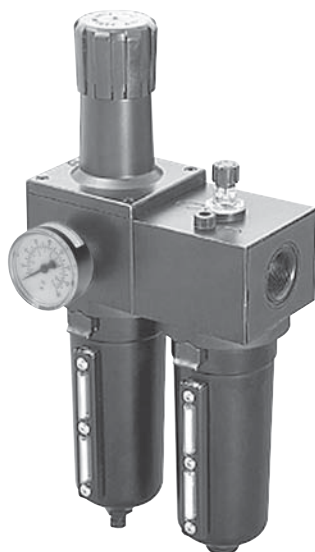
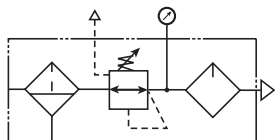


Ordering Information

Model Type	Port Size	Plastic Bowl / Bowl Guard Without Gauge 0 to 125 PSI (0 to 8.6 bar)	Plastic Bowl / Bowl Guard With Gauge 0 to 125 PSI (0 to 8.6 bar)	Metal Bowl / Sight Gauge Without Gauge 0 to 125 PSI (0 to 8.6 bar)	Metal Bowl / Sight Gauge With Gauge 0 to 125 PSI (0 to 8.6 bar)	Plastic Bowl / Bowl Guard / With Gauge With End Blocks 0 to 125 PSI (0 to 8.6 bar)
Manual Drain	3/8	D28-03-FK00	D28-03-FKG0	D28-03-FL00	D28-03-FLG0	D28-03-FKBG
	1/2	D28-04-FK00	D28-04-FKG0	D28-04-FL00	D28-04-FLG0	D28-04-FKBG
	3/4	D28-06-FK00	D28-06-FKG0	D28-06-FL00	D28-06-FLG0	D28-06-FKBG
Automatic Drain	3/8	D28-03-FG00	D28-03-FGG0	D28-03-FH00	D28-03-FHG0	D28-03-FGBG
	1/2	D28-04-FG00	D28-04-FGG0	D28-04-FH00	D28-04-FHG0	D28-04-FGBG
	3/4	D28-06-FG00	D28-06-FGG0	D28-06-FH00	D28-06-FHG0	D28-06-FGBG

Options - To order an option supplied with the unit model, add the appropriate coded suffix letter in the designated position of the model number.

Combination D39



D39-08-FLG0

Features

- See Individual Component Pages for Details
- Port Blocks, Manifold Block, Ball Valve and Wall Bracket Must Be Ordered Separately

Specifications

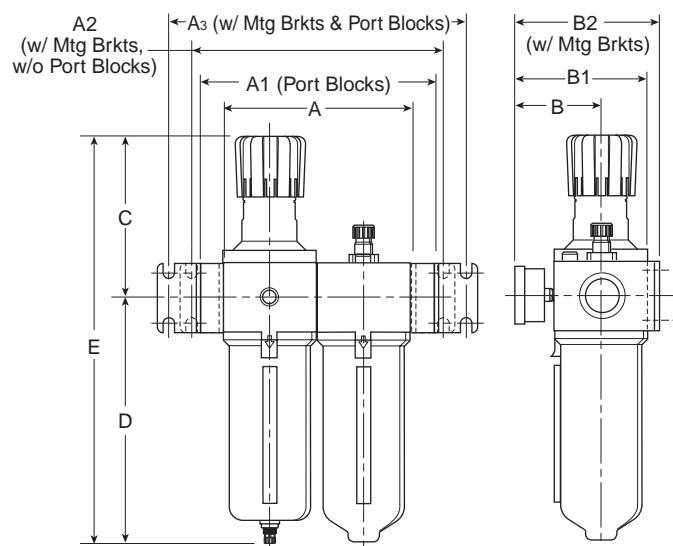
Flow Capacity*	1	250 SCFM (118 dm ³ /s)
Adjusting Range Pressure	0 to 125 PSIG (0 to 8.6 bar)	
Gauge Port	1/4	
Maximum Supply Pressure	250 PSIG (17.2 bar)	
Operating Temperature	32° to 175°F (0° to 80°C)	
Port Size**	NPT	1
Standard Filtration	Micron	5
Weight	lb. (kg)	5.3 (2.4)

* Inlet pressure 100 PSIG (6.9 bar). Secondary pressure 90 PSIG (6.2 bar).
 ** Port blocks available for BSPP thread & 1-1/2" port.

"F" Series Filters, Type "A" 5 micron elements: All Wilkerson Type "A" 5 micron elements **meet or exceed** ISO Class 3 for maximum particle size and concentration of solid contaminants.

Materials of Construction

Body & Bowl	Aluminum
Element Retainer / Baffle and Deflector	Plastic
Filter Element	Sintered Polyethylene
Piston	Plastic
Seals	Nitrile
Sight Dome	Polycarbonate
Sight Gauge	Polyamide (Nylon)
Springs	Steel
Suggested Lubricant	Airline Oil F442001
Valve Assembly	Brass / Nitrile




Dimensions

Model	Inches (mm)	A	A ₁	A ₂	A ₃	B	B ₁	B ₂	C	D	E
Standard Unit D39-XX-XXXX		7.24 (184)	9.53 (242)	9.84 (250)	12.13 (308)	3.62 (92)	5.20 (132)	5.74 (146)	6.38 (162)	9.57 (243)	15.95 (405)

= “Most Popular”

Note: For Kits and Repair Parts, see individual pages for Filters, Regulators, and Lubricators.

 **WARNING**

Product rupture can cause serious injury.
Do not connect regulator to bottled gas.
Do not exceed maximum primary pressure rating.

CAUTION:

REGULATOR PRESSURE ADJUSTMENT – The working range of knob adjustment is designed to permit outlet pressures within their full range. Pressure adjustment beyond this range is also possible because the knob is not a limiting device. This is a common characteristic of most industrial regulators, and limiting devices may be obtained only by special design.

For best performance, regulated pressure should always be set by increasing the pressure up to the desired setting.

B

Filters, Regulators, Lubricators

Ordering Information

Model Type	Port Size	Metal Bowl, with Gauge 7 to 125 PSIG (0.4 to 8.6 bar)
Manual Drain	1	D39-08-FLG0
Automatic Drain	1	D39-08-FHG0

Options - To order an option supplied with the unit model, add the appropriate coded suffix letter in the designated position of the model number.

Notes

B

Filters, Regulators, Lubricators