

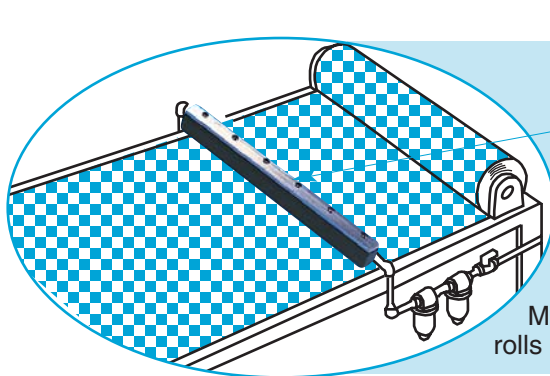
STRIP (AIR CURTAIN) AIRMOVERS

The Brauer strip airmover produces a curtain of air along the length of the application. The strip airmover uses the same Coanda effect utilised in our other air amplifiers. Again there are no moving parts, with compressed air from a local production line source being used to amplify and entrain surrounding air. Output volumes almost twenty times higher than those at the input can be achieved.

Many tooling engineers use drilled or slotted lengths of piping in an attempt to flute air over the required area. But these techniques are highly inefficient in their use of expensive compressed air. Using the built in effectiveness of the strip airmover, significant compressed air savings can be achieved with short investment paybacks. Noise levels will also be reduced.

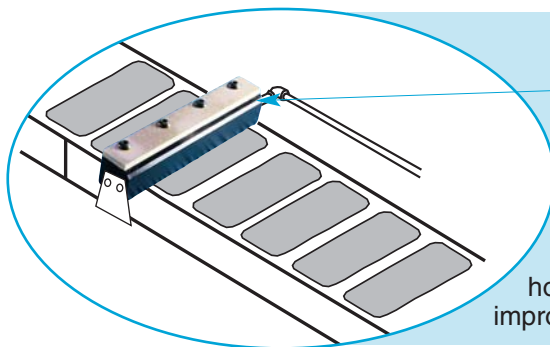
Our strip airmovers are also offered in stainless steel and can be manufactured in **any** length additionally a combination of our standard sizes will provide suitable usable lengths.

SOME TYPICAL APPLICATIONS – STRIP AIRMOVERS



TEXTILES

Model SE600 strip airmovers are ideal for cleaning and drying large rolls of cloth.



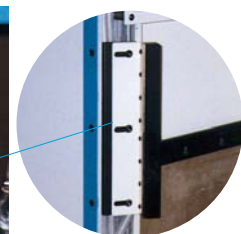
LABEL PRINTING

A model SE150 Strip Airmover cools the label adhesive and holds down the end of the labels until they reach the rollers, thus improving quality and reducing damage.

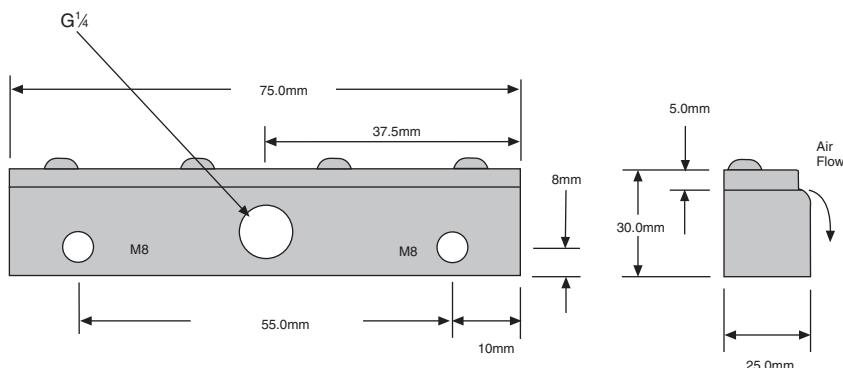


PROTECTION OF ELECTRICS

SE300 strip airmover used on shot blast equipment to prevent dust getting near electrics



ALUMINIUM STRIP AIRMOVER SE75



Material: Aluminium/Zinc plated steel

Weight: 0.16Kg

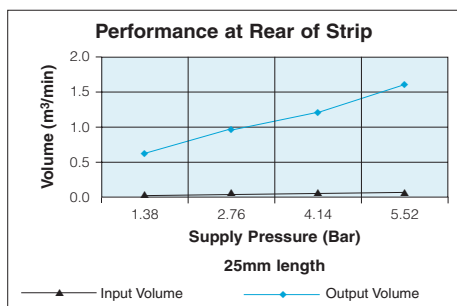
Standard Gap: 0.05-0.10mm

dB(A) at: 5.5 bar is 80

Shims: Not Applicable

Standard Inlet Threads: G $\frac{1}{4}$

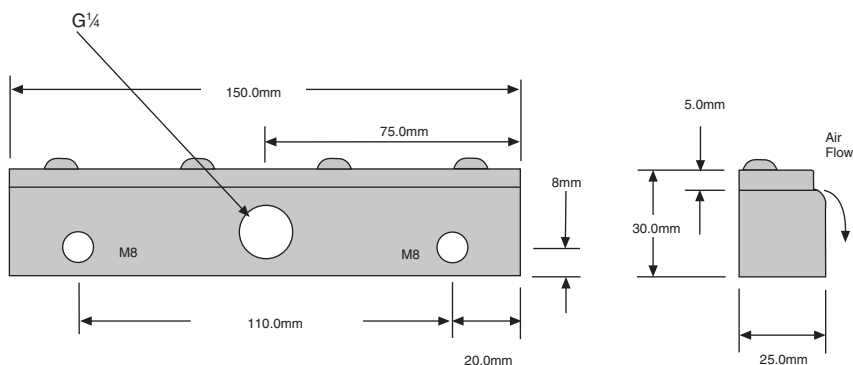
Options: $\frac{1}{4}$ " NPT
Please specify on order $\frac{1}{4}$ " NPTF



Bar	Vol in m³/min	Vol out m³/min
1.38	0.034	0.651
2.76	0.054	0.963
4.14	0.074	1.218
5.52	0.093	1.642

per 25mm length

ALUMINIUM STRIP AIRMOVER SE150



Material: Aluminium/Zinc plated steel

Weight: 0.324Kg

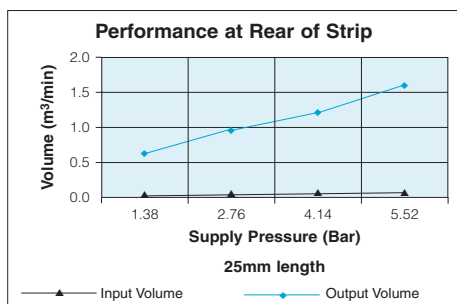
Standard Gap: 0.05-0.10mm

dB(A) at: 5.5 bar is 80

Shims: Not Applicable

Standard Inlet Threads: G $\frac{1}{4}$

Options: $\frac{1}{4}$ " NPT
Please specify on order $\frac{1}{4}$ " NPTF



Bar	Vol in m³/min	Vol out m³/min
1.38	0.034	0.651
2.76	0.054	0.963
4.14	0.074	1.218
5.52	0.093	1.642

per 25mm length

SE300 ALUMINIUM STRIP AIRMOVER



Material: Aluminium/Zinc plated steel

Weight: 0.7Kg

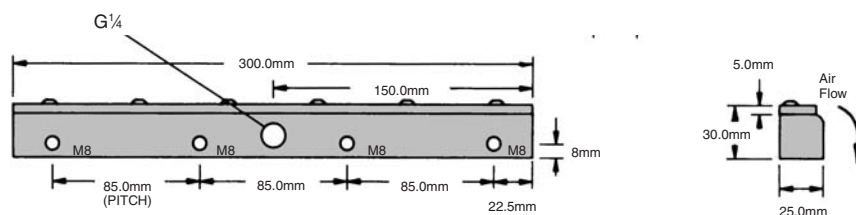
Standard Gap: 0.05-0.10mm

dB(A) at: 5.5 bar is 80

Shims: Not Applicable

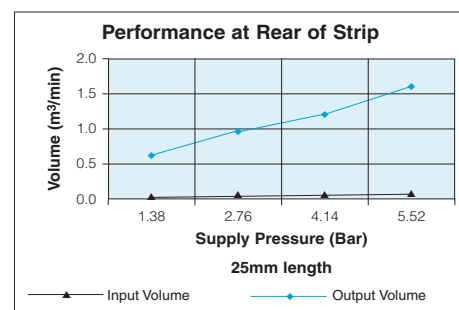
Standard Inlet Threads: G $\frac{1}{4}$

Options: $\frac{1}{4}$ " NPT
Please specify on order $\frac{1}{4}$ " NPTF



Bar	Vol in m ³ /min	Vol out m ³ /min
1.38	0.034	0.651
2.76	0.054	0.963
4.14	0.074	1.218
5.52	0.093	1.642

per 25mm length



SE450 ALUMINIUM STRIP AIRMOVER



Material: Aluminium/Zinc plated steel.

Weight: 1.0Kg

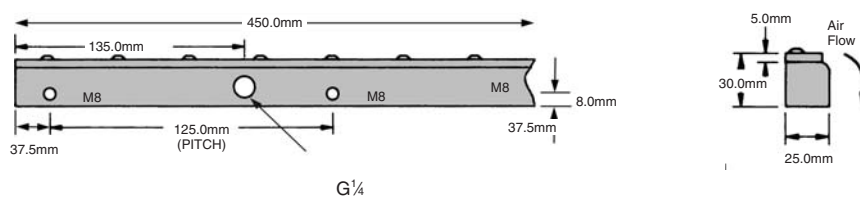
Standard Gap: 0.05-0.10mm

dB(A) at: 5.5 bar is 80

Shims: Not Applicable

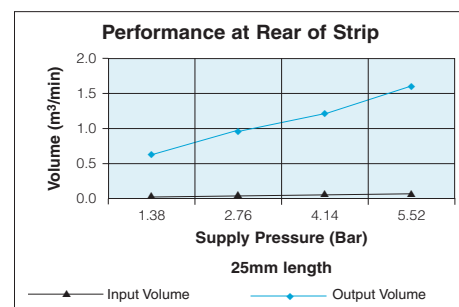
Standard Inlet Threads: G $\frac{1}{4}$

Options: $\frac{1}{4}$ " NPT
Please specify on order $\frac{1}{4}$ " NPTF

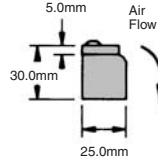
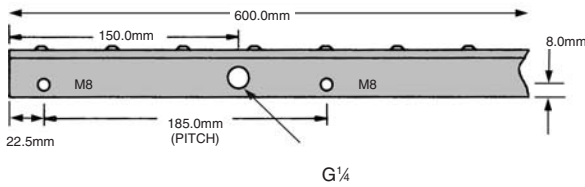


Bar	Vol in m ³ /min	Vol out m ³ /min
1.38	0.034	0.651
2.76	0.054	0.963
4.14	0.074	1.218
5.52	0.093	1.642

per 25mm length



ALUMINIUM STRIP AIRMOVER SE600



Material: Aluminium/Zinc plated steel.

Weight: 1.35Kg

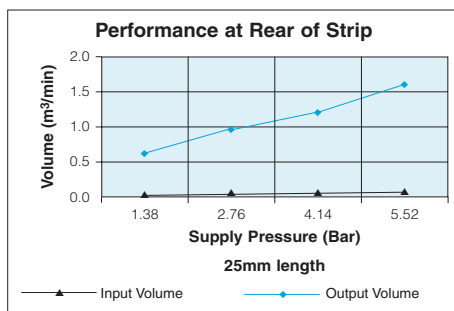
Standard Gap: 0.05-0.10mm

dB(A) at: 5.5 bar is 80

Shims: Not Applicable

Standard Inlet Threads: G $\frac{1}{4}$

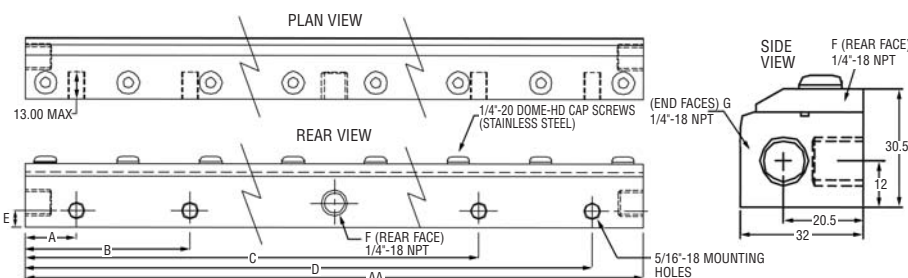
Options: $\frac{1}{4}$ " NPT
Please specify on order $\frac{1}{4}$ " NPTF



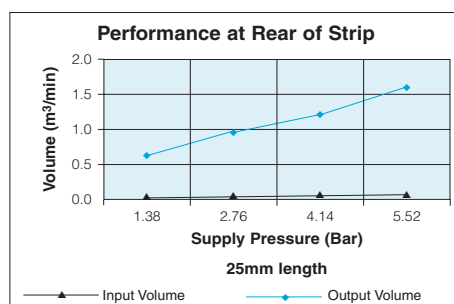
Bar	Vol in m³/min	Vol out m³/min
1.38	0.034	0.651
2.76	0.054	0.963
4.14	0.074	1.218
5.52	0.093	1.642

per 25mm length

ALUMINIUM STRIP AIRMOVER SE750



PART NO. (Stainless Steel)	AA	A	B	C	D	E	F # of Rear Inlets	G # of Side Inlets
Model SE750	30" 761mm	1.4" 35mm	8.9" 227mm	19.1" 485mm	28.6" 727mm	0.3" 8mm	2	2



Bar	Vol in m³/min	Vol out m³/min
1.38	0.034	0.651
2.76	0.054	0.963
4.14	0.074	1.218
5.52	0.093	1.642

per 25mm length



Material: Aluminium/Zinc plated steel.

Weight: 3.6Kg

Standard Gap: 0.05-0.10mm

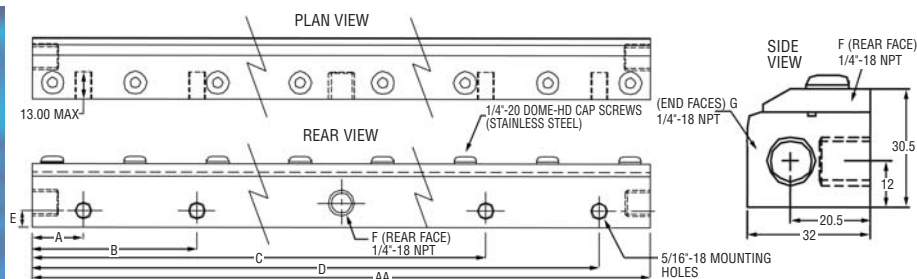
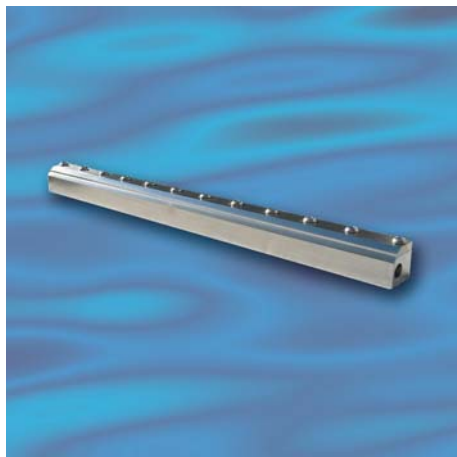
dB(A) at: 5.5 bar is 80

Shims: Not Applicable

Standard Inlet Threads: G $\frac{1}{4}$

Options: $\frac{1}{4}$ " NPT
Please specify on order $\frac{1}{4}$ " NPTF

SE900 ALUMINIUM STRIP AIRMOVER



PART NO. (Stainless Steel)	AA	A	B	C	D	E	# of Rear Inlets	G # of Side Inlets
Model SE900	36" 914mm	1.4" 35mm	10.9" 277mm	26.9" 683.5mm	34.6" 879mm	0.3" 8mm	2	2

Material: Aluminium/Zinc.

Weight: 4.3Kg

Standard Gap: 0.05-0.10mm

dB(A) at: 5.5 bar is 80

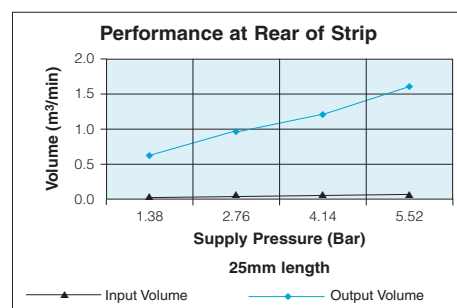
Shims: Not Applicable

Standard Inlet Threads: G $\frac{1}{4}$

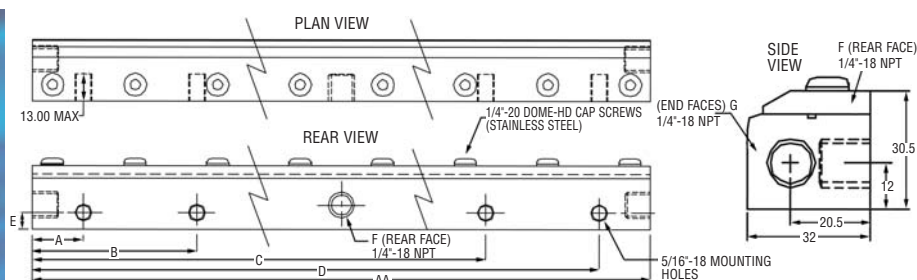
Options: $\frac{1}{4}$ " NPT
Please specify on order $\frac{1}{4}$ " NPTF

Bar	Vol in m ³ /min	Vol out m ³ /min
1.38	0.034	0.651
2.76	0.054	0.963
4.14	0.074	1.218
5.52	0.093	1.642

per 25mm length



SE75SS STAINLESS STEEL STRIP AIRMOVER



PART NO. (Stainless Steel)	AA	A	B	C	D	E	# of Rear Inlets	G # of Side Inlets
Model SE75SS	3" 76mm	0.6" 16mm	-	-	2.4" 60mm	0.3" 8mm	1	2

Material: Stainless Steel (Grade 304)

Weight: 0.37

Standard Gap: 0.05-0.10mm

dB(A) at: 5.5 bar is 80

Shims: Not Applicable

Standard Inlet Threads: G $\frac{1}{4}$

Options: $\frac{1}{4}$ " NPT
Please specify on order $\frac{1}{4}$ " NPTF

Bar	Vol in m ³ /min	Vol out m ³ /min
1.38	0.034	0.651
2.76	0.054	0.963
4.14	0.074	1.218
5.52	0.093	1.642

per 25mm length

